

## Health

By 2030, the region’s population is healthy, long-lived, and has a good quality of life. Achieving this goal means:

1. There is an increased emphasis on wellness and healthy living.
2. There is a 30% reduction in sickness, hospitalizations, and preventable deaths (from such causes as obesity, tobacco use, traffic accidents, and substance abuse).
3. All residents of the region have access to an accessible patient-centered “medical home,” including primary and specialty care, and the region has the provider capacity to meet that demand.

(Goals 4 and 5 addressed in Red Focus Group.)

*Questions/issues for Focus Group consideration:*

- Strategies should include food, regional food production

**Goal 1** There is an increased emphasis on wellness and healthy living.

### Current Conditions

#### **Health Indicators**

The QLI report uses several indicators of health including infant mortality, obesity rates, cardiovascular health, fruit and vegetable consumption, rates of physical activity, mental health statistics and public health spending. Colorado’s Health Information Dataset through the CDPHE Behavioral Risk Factor Surveillance System, provides county data on the following health factors. Other reports, provide comprehensive statistics on regional health indicators as many have to begin reporting data to state and federal regulatory agencies.

[Further details on regional health conditions are found in the following reports]

#### Indicators

Gallup Healthways Well-Being Index – 2008, 2009, 2010 behavioral economic metrics – life evaluation, emotional health, physical health, healthy behavior, work environment and basic access

Ranking of Colorado cities

Ranking of Congressional Districts

Suicide rates and depression

2004, 2006 Life Death and Disease – El Paso County Health Survey

Injury hospitalizations – intentional/ self inflicted

Colorado Health Information Datasets

Data Gaps Teller County health statistics

**Goal 2** There is a 30% reduction in sickness, hospitalizations, and preventable deaths (from such causes as obesity, tobacco use, traffic accidents, and substance abuse).

Current Conditions

Colorado Health information data sets are provided by the Colorado Department of Public Health and Environment and the Center of Disease Control. The information ranges from obesity, tobacco use, intentional injury and non-intentional injury statistics. One of the leading reporting mechanisms is produced by the CDC, the *Behavioral Risk Factor Surveillance System Survey*. The following is *2009 Data*, and shows a percentage of adults that reported behaviors associated to certain health risks.<sup>1</sup>

Colorado Behavioral Risk Factor Surveillance System. CDPHE

**EL PASO** Data, 2007 - 2008, n= 2750 **TELLER** Data, 2007 - 2008, n= 168

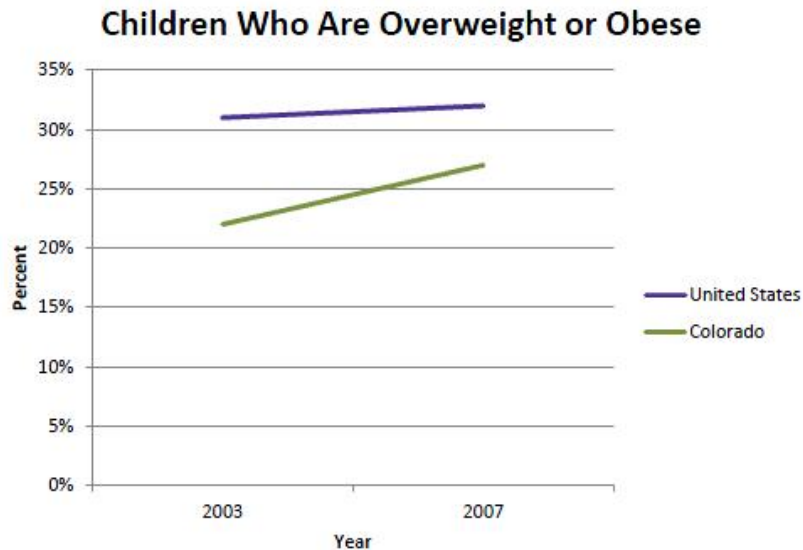
	BRFSS Topics (%)	Teller	EPC
Diagnosed with diabetes		5.0	5.3
Current smoker		18.9	19.8
Currently have health insurance		80.0	86.6
Fecal occult blood test in past 2 years (ages 50 and over)		18.2	15.5
Ever had colonoscopy (ages 50 and over)		65.9	70.8
Had clinical breast exam and mammogram in the past 2 years (women 50 and older)		77.2	70.9
Ever had a Pap smear (women 18 and older)		100.0	93.2
Ever had asthma		20.9	12.3
Any leisure time physical activity		80.1	81.5

<sup>1</sup> Centers for Disease Control and Prevention (CDC). *Behavioral Risk Factor Surveillance System Survey Data*. Atlanta, Georgia: U.S. Department of Health and Human Services, Centers for Disease Control and Prevention, 2009.

BRFSS Topics (%)	Teller	EPC
Ate 5 or more servings of fruits and vegetables per day	34.5	25.1
Overweight, BMI** 25.0 to 29.9	37.8	34.8
Obese, BMI** > 30	17.2	19.3

\*Confidence Interval  
 \*\*Body Mass Index (BMI) is defined as weight in kilograms divided by height in meters squared (w/h\*\*2).  
 Percents are weighted to the total population.

Youth Obesity Change in Colorado  
 Source: Colorado Children’s Campaign



Prevention (CDC). Behavioral Risk Factor Surveillance System Survey 2009 Data

Colorado Springs Statistical Area (Includes El Paso and Teller County)

Health Status – fair or poor	8.9%
Exercise – no exercise in past 30 days	17.5%
Diabetes – diagnosed with diabetes	5.2%
Flu Vaccination – 65 and older not having shot	27%
Smoking – currently	17.1%
Binge Drinking – 5 or more in one occasion	
One or more times a month	15%
Obesity – reporting a BMI $\geq 30$	18.2%

Source: CDC BRFSS, 2009

Indicators

Infant mortality

Obesity rates

Accident reports – Colorado Springs Police Dept.

Arrests (DUI/DUID, narcotic seizures – lags 3 years)

Colorado Health Information Datasets – CDPHE and CDC

BRFSS

Birth defects

Cancer

Pregnancy Risk Assessment Monitoring

Injury hospitalization – with intentional and non-intentional injury mechanisms

Tobacco attitudes and behaviors

El Paso County Health – Life Death and Disease (2006)

(many health statistics – diseases, access, crimes, physical activity)

CDC – Healthy Communities Assessment – Health Resources County Comparison Tool

Population characteristics, prenatal and birth statistics, deaths related to heart disease, cancer, stroke, diabetes, chronic lower respiratory disease

Health Resources – primary care physicians, hospital beds

Community Health Status Indicators – Department of Health and Human Services (County level)

Life expectancy

Deaths per 100,000

Self Rated Health Status

Average number of unhealthy days in past month

Leading causes of death by age

Birth and Death measures

Vulnerable populations

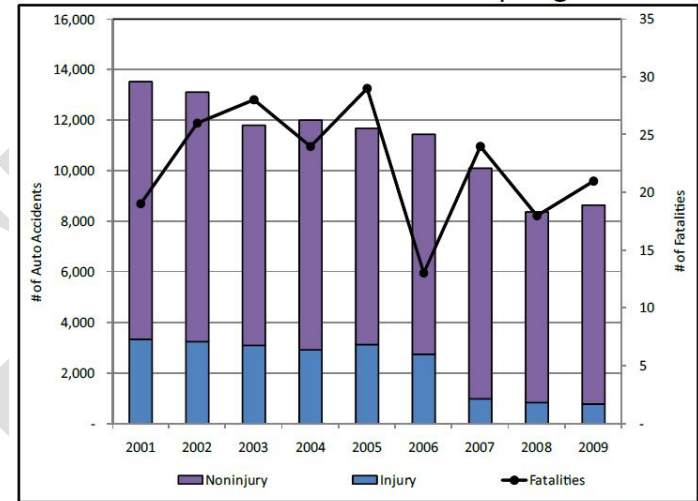
Preventative services use

Infectious disease cases

Environmental health

Risk Factors for premature death

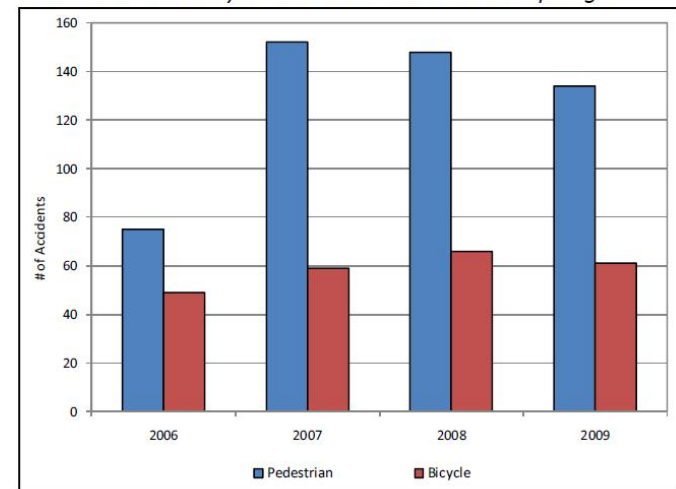
Automobile Accidents in Colorado Springs



Source: Colorado Springs Police Department

Bicycle and Pedestrian Safety

Pedestrian and Bicycle Accidents in Colorado Springs



Source: Colorado Springs Police Department

Data Gaps

- Rates of physical activity – more recent or from other sources
- Mental health statistics
  - Patient beds -
  - Suicide/depression rates
- Public health spending

**Goal 3** All residents of the region have access to an accessible patient-centered “medical home,” including primary and specialty care, and the region has the provider capacity to meet that demand.

Current Conditions

Several medical associations jointly describe a medical home as

“A patient centered medical home (PCMH) is a health care setting that facilitates partnerships between individual patients, and their personal physicians, and when appropriate, the patient’s family. Care is facilitated by registries, information technology, health information exchange and other means to assure that patients get the indicated care when and where they need and want it in a culturally and linguistically appropriate manner”.<sup>2</sup>

Further documentation of medical home systems is necessary for evaluating the patient accessibility and gaps in provider capacity. Peak Vista, has 17 locations, provides primary medical home to over 58,000 patients and offers services such as dental, health education, immunizations, outreach, school based health centers, mobile clinics and integrated behavioral health.<sup>3</sup>

<u>Provider</u>	<u>Beds</u>
Peak View	24 geriatric
Evans Military	12
Aspen Pointe	(16)
Cedar Springs	110

<sup>2</sup> American Academy of Family Physicians (AAFP) American Academy of Pediatrics (AAP) American College of Physicians (ACP) American Osteopathic Association (AOA). *Joint Principles of the Patient-Centered Medical Home March 2007*. Accessed February 1, 2011.

[http://www.acponline.org/advocacy/where\\_we\\_stand/medical\\_home/approve\\_jp.pdf](http://www.acponline.org/advocacy/where_we_stand/medical_home/approve_jp.pdf)

<sup>3</sup> QLI Report pg 67

Indicators

CDC – Helathy Communities Assessment – Health Resources County Comparison Tool

Health Resources – Primary Care Physician

Department of Health and Human Services – Community Health Status Indicators

Access to Care – uninsured, Medicare beneficiaries, Medicaid beneficiaries, primary care physicians/100,000, dentists/100,000 etc.

Data Gaps

Capacity evaluation

DRAFT

## Arts and Culture

By 2030, arts and culture are fully integrated into and contribute to the social and economic vitality of the region. Achieving this goal means:

1. The region offers a diverse and broad range of arts, cultural, and entertainment activities and events. These events contribute to the local economy.
2. The region’s arts scene draws innovative companies and attracts young creatives.
3. The Pikes Peak region will have fully implemented the 2010 Cultural Plan in order to increase economic vitality.

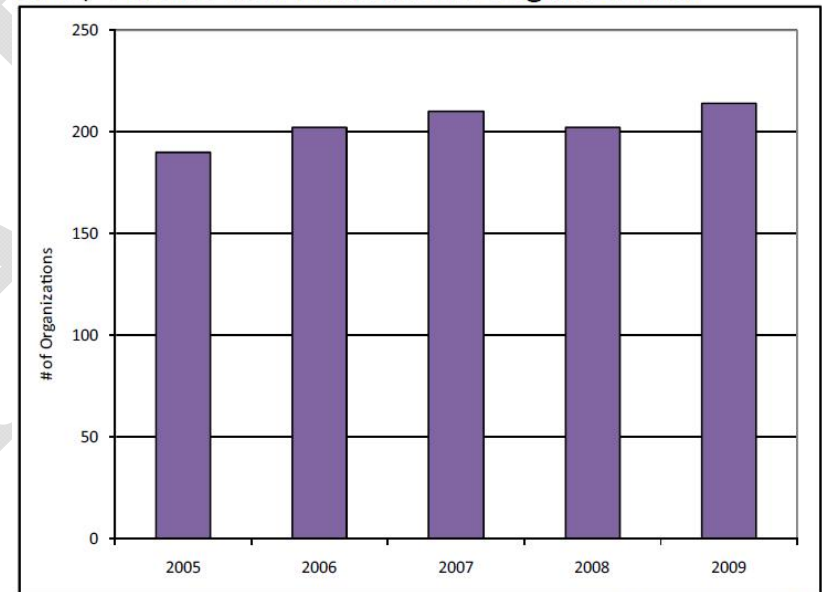
**Goal 1** The region offers a diverse and broad range of arts, cultural, and entertainment activities and events. These events contribute to the local economy.

### Current Conditions

The Cultural Office of the Pikes Peak Region (COPPeR) has taken the lead on arts and culture in the Pikes Peak Region since January 2005. Recently, COPPeR produced the 2010 Cultural Plan which documents the current state of arts and cultural of the Pikes Peak Region. The plan identifies specific actions to achieve goals that promote programs, partnerships and increase community engagement in the arts. COPPeR is primarily targeting artists and the arts community and is developing means to track and measure public participation in cultural programs. As of 2009, El Paso and Teller counties are home to more than 200 arts, cultural and humanities organizations. Because of the high number of organizations the region ranks 36th out of 276 metropolitan areas in number of arts businesses per capita.

The QLI Community Visioning Survey asked how often families participate in arts and cultural activities. The survey does not identify barriers that cause a lack of participation. Identifying barriers to engagement is necessary for creating a sustainable art and culture community.

Arts, Culture and Humanities Organizations



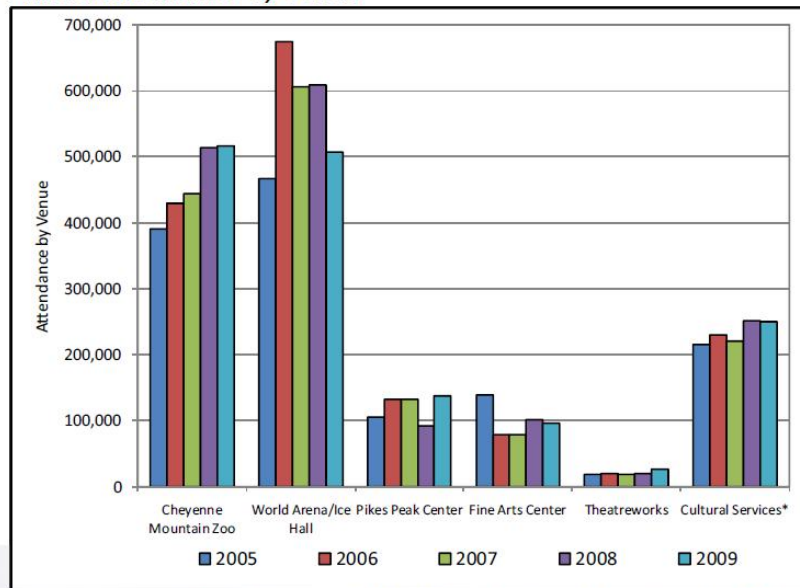
Source: National Center for Charitable Statistics

Event-Related Spending by Non-profit Arts and Culture Audiences Totaled \$59.62 million (excluding cost of admission)

<b>Attendance to Arts and Culture Events</b>	<b>Resident* Attendees</b>	<b>+</b>	<b>Non-Resident* Attendees</b>	<b>=</b>	<b>AllAttendees</b>
Total Attendance to Arts and Culture Events	1,051,408		406,047		1,457,455
Percentage of Total Attendance	72		28		100
Average Event-Related Spending Per Person	\$33.63		\$59.75		\$40.90
Total Event-Related Expenditures	\$35,358,852		\$24,261,308		\$59,620,160

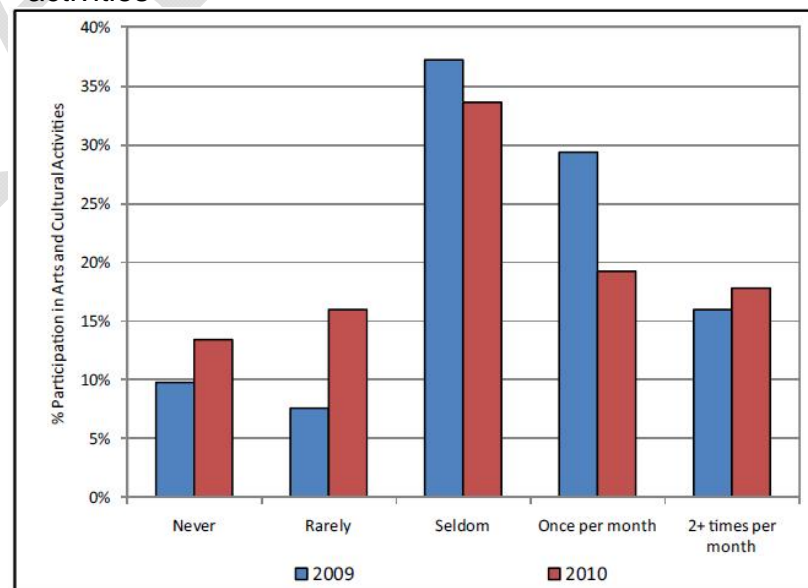
Source: 2007 Americans for the Arts and Colorado Creative Industries: Division of CO Office of Economic Development and International Trade. Based on 2005 Arts & Economic Prosperity III

**Local Venue Attendance**  
Annual Attendance by Venue



Source: Statistics from Cheyenne Mountain Zoo, World Arena, Pikes Peak Center, Fine Arts Center, Theatreworks, and Cultural Services (Pioneers Museum, Rock Ledge Ranch, Starsmore, Helen Hunt Falls, Garden of the Gods)

**Percent participation in Arts and Cultural activities**



Source: 2009 and 2010 QLI Community Visioning Survey

Indicators

- Event related spending
- Local venue attendance
- Percent participation in arts and cultural activities

**Goal 2** The region’s arts scene draws innovative companies and attracts young creatives.

Current Conditions

As of 2009, El Paso and Teller counties are home to more than 200 arts, cultural and humanities organizations. Because of the high number of organizations the region ranks 36th out of 276 metropolitan areas in number of arts businesses per capita. A 2008 State of Colorado’s Creative Economy report found that the *nonprofit* arts industry generated \$94.7 million in economic impact and 2,639 jobs.<sup>4</sup> Americans for the Arts reports, as of January 2010 Congressional District 5 is home to 1,921 arts-related businesses that employ 6,466 people. The 2008 State of Colorado’s Creative Economy report also highlights that the Colorado Springs metro area funds the arts with a combination of grants, dues, philanthropic support, and public investments by Colorado Springs and other municipalities. The money is used to build an art community supporting visual, dance, theatre, literary, and other artistic expression. Literary businesses and publishing are the largest creative sector in the region with over 4,800 jobs. Nearly half of the jobs are in the greeting card and newspaper publishing industries. An additional 700 self employed writers and authors also work in the region.

Arts and Entertainment Sectors. Colorado Springs MSA	
Establishments	Annual Payroll
<b>2008</b> 259	67,476
<b>2007</b> 263	94,263
<b>2006</b> 252	86,101
Source: US Census Factfinder. Business Patterns	

<sup>4</sup> Nonprofit arts and culture organizations and events include public arts councils and public presenting facilities/institutions. The study excludes spending by individual artists and the for-profit arts and entertainment sector (e.g., Broadway or the motion picture industry).

### Indicators

Arts and Entertainment sectors – number of establishments and payroll  
Creative industries in Colorado Congressional District 5 non-profit and for profit Art businesses and companies  
Americans for the Arts Creative Industries survey  
Includes El Paso, Park (partial), Teller, Chafee, Lake and Fremont Counties

### Data Gaps

Measuring how arts scene draws other companies to the region  
Composition of innovative companies

**Goal 3** The Pikes Peak region will have fully implemented the 2010 Cultural Plan in order to increase economic vitality.

### Current Conditions

COPPeR worked with Americans for the Arts to produce an economic impact report on the region in 2007.  
COPPeR produced the 2010 Cultural Plan which documents the current state of arts and cultural of the Pikes Peak Region.

### COPPeR Plan Goals and Objectives

“This 10-year plan identifies goals, strategies and tactics for supporting the growth and diversity of cultural activities and offerings in the Pikes Peak region, and, in turn, pointing to methods in which the arts can strengthen all sectors of the community.”

GOAL 1: Increase engagement, access and participation in the cultural life of the region

*Objective 1:* Improve marketing for cultural activities

*Objective 2:* Expand community and neighborhood cultural development

*Objective 3:* Eliminate barriers to access for all citizens

*Objective 4:* Measure and track public participation in cultural programs

GOAL 2: Integrate the arts into the social, economic and political fabric of the community

*Objective 1:* Develop affordable and accessible venues and facilities

*Objective 2:* Define the arts and cultural sector as an economic driver and grow creative industries

*Objective 3:* Affirm culture, identity and heritage

GOAL 3: Strengthen and expand arts learning

*Objective 1:* Focus on K-12 Arts curriculum

*Objective 2:* Enhance Higher Education and Adult Education

GOAL 4: Foster thriving arts organizations

*Objective 1:* Enhance the sustainability of existing cultural organizations

*Objective 2:* Create sustainable funding for cultural organizations

GOAL 5: *Support creative individuals and advance arts leadership*

*Objective 1:* Recognize and support creative individuals

*Objective 2:* Advance leadership in the arts

### Indicators

Achievement of COPPeR goals – adoption of metrics

## Education

By 2030, comprehensive, affordable, life-long educational opportunities are available to all. Achieving this goal means:

1. All students have access to a 21<sup>st</sup>-Century K-12 education that prepares them for the future.<sup>5</sup>
2. Affordable, high-quality early childhood care and education are available to all residents of the region to ensure school readiness.
3. Regional higher education, professional and technical skills training are increasingly available and accessible to residents of the region.

*Questions/issues for Focus Group consideration:*

- Address preparing people for the workforce.
- Discuss partnerships with business as a strategy.
- Include graduation rates.
- Consider concepts of affordability and accessibility for higher education and training.
- Defining “available and accessible”.

**Goal 1** All students have access to a 21<sup>st</sup>-Century K-12 education that prepares them for the future.<sup>6</sup>

### Current Conditions

State Board of Education 21<sup>st</sup> Century Education goal from strategic plan 200x-200x

Lead a redesign of the public education accountability system that aims to produce graduates that are equipped for success in the 21<sup>st</sup> century.

- Advance a plan designed to close the achievement gap and simultaneously to reduce the statewide dropout rate.
- Prioritize, increase and coordinate resources to support our field services.
- Lead the statewide effort to ensure the standards and assessments prepare 21<sup>st</sup> century learners for post secondary and workforce success.
- Forward a plan to collect, use and share data in ways that support accountability, inform policymaking, and advance teaching and learning.
- Encourage collaborative solutions that leverage resources from different agencies (BOCES, Higher Education, etc.) and which promote the integrated delivery of educational services.

---

<sup>5</sup> 21<sup>st</sup> Century skills implementation requires the development of core academic subject knowledge and understanding. Within the context of core knowledge instruction, students must also learn the essential skills for success in today’s world, such as critical thinking, problem solving, communication, and collaboration.

<sup>6</sup> 21<sup>st</sup> Century skills implementation requires the development of core academic subject knowledge and understanding. Within the context of core knowledge instruction, students must also learn the essential skills for success in today’s world, such as critical thinking, problem solving, communication, and collaboration.

Others goal topics – Fulfill roll as educational authority, improve choice opportunities, enhance educator workforce quality, efficiency and effectiveness and improve funding stability.

The Colorado Department of Education has samples of SMART Performance goals for District Educational Improvement Plans, they include addressing:

- Annual student achievement levels
- Longitudinal growth
- Improvements to disaggregated groups
- Reducing learning gaps
- Postsecondary readiness

### High School Graduation Rate

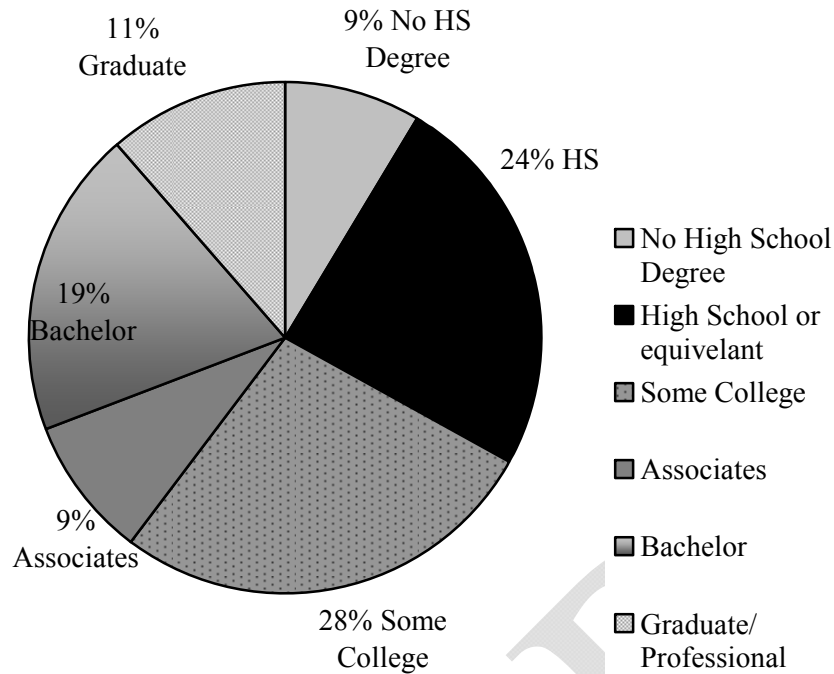
School District	School Year				% Change
	2005-06	2006-07	2007-08	2008-09	
Colorado Springs 11	66.1%	67.5%	66.7%	69.4%	2.7%
Academy 20	89.5%	91.4%	94.7%	91.6%	-3.1%
Harrison 2	61.8%	69.8%	63.9%	64.7%	0.8%
Falcon 49	84.2%	83.2%	79.7%	81.5%	1.8%
Widefield 3	79.5%	81.5%	83.7%	82.9%	-0.8%
Fountain-Fort Carson 8	72.6%	84.0%	83.7%	87.6%	3.9%
Woodland Park RE-2	86.7%	78.5%	78.2%	85.0%	6.8%

Overall Average by Student	School Year				% Change
	2005-06	2006-07	2007-08	2008-09	
Largest 7 Springs MSA	74.6%	76.8%	76.7%	78.2%	1.5%
Largest 7 Denver MSA				72.9%	
Ft. Collins MSA - All				83.0%	
State of Colorado	74.1%	75.0%	73.9%	74.6%	0.7%

Source: Colorado Department of Education

Department of Education Institute of Education Sciences

Education Attainment for % Population 18 years and older. Colorado Springs MSA. (Total 448,673) Source: ACS 5 year estimates 2005-2009



Indicators

Education attainment  
US Census

Graduation rates  
Dept of Education

CSAP scores, ACT and SAT - achievement  
Colorado DOE

Data Gaps

Defining a 21<sup>st</sup> Century education

**Goal 2** Affordable, high-quality early childhood care and education are available to all residents of the region to ensure school readiness.

Current Conditions

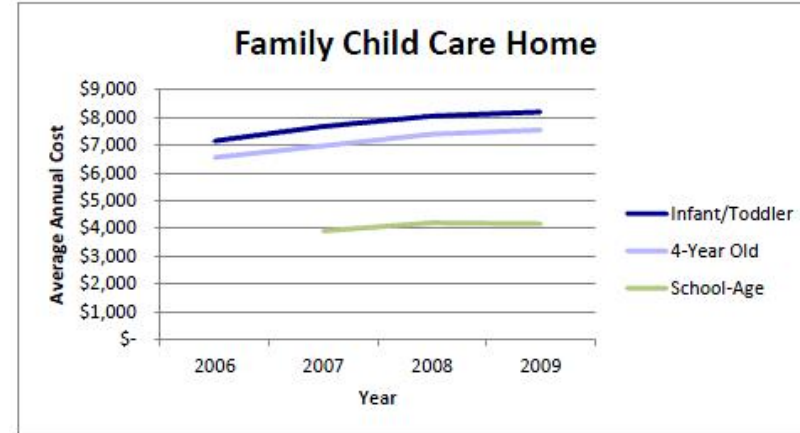
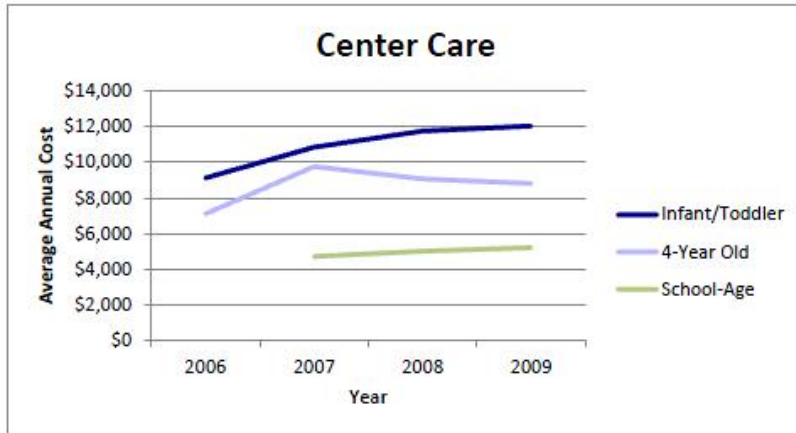
There are about 50 Head Start Centers in the El Paso and Teller County Region [Us Dept of Health and Human Services ECKLC] The Community Partnership for Child Development prepares more than 1,900 children and their families for success in school and life through Head Start, Early Head Start and Colorado Preschool Program. Every three years, CPCD does a comprehensive assessment of our community resources and gaps in services for young children and their families. The most recent report was completed for 2010 and is using the Quality of Life Indicators Project as a basis for our community assessment. The CPCD referenced the Colorado Children’s Campaign KidsCount 2010 report, stating, child care expenses are typically the second largest expenditure for low income families. It was further referenced that according to *Parents and the high price of child care, update 2008*, National Association of Child Care Resource and Referral Agencies, Colorado ranks 8<sup>th</sup> with the most expensive care in the nation. The price of infant care is nearly 50% of the median single parent income and preschool costs have gone up almost 38%.

The Alliance for Kids brings together agencies and individuals to work collaboratively to create a system of care for young children from birth to eight years and their families in El Paso County.

Services in this system encompass:

1. Early Care and Education
2. Health
3. Mental Health
4. Family Support
5. Program Quality & Standards — assuring high quality services
6. Program Availability — assuring that services are available for everyone
7. Professional Development — assuring that staff are well educated
8. Public Engagement — assuring that the community supports young children
9. Governance — assuring that the Alliance is effective and efficient
10. Accountability — assuring that goals are met
11. Funding & Finance — assuring adequate funding

Cost of Early Childhood Care in Colorado. Source: Colorado Children Campaign 2011 report.



Indicators

- Colorado Children’s Campaign, Alliance for Kids and Community Partnership for Child Development
- Cost – Economic Impact
- Percent of household budget
- Number of establishments
- Vulnerable families
- Family Economics and supports
- Child and maternal health
- Education – enrollment and achievement

Data Gaps

- Early Childhood care – Quantity, quality and affordability
- Some Teller gaps

**Goal 3** Regional higher education, professional and technical skills training are increasingly available and accessible to residents of the region.

Current Conditions

**Outcomes of Higher Education**

*Number of Higher Education Degrees Awarded Annually*

Degree	School Year				Change
	2005-06	2006-07	2007-08	2008-09	
Associate	1,475	1,488	3,414	6,588	+3,174
Bachelor	4,713	6,055	5,695	5,638	-57
Master	1,803	2,127	1,908	2,448	+540
Doctorate	20	60	48	74	+26
<b>TOTAL</b>	<b>8,011</b>	<b>9,730</b>	<b>11,065</b>	<b>14,748</b>	<b>+3,683</b>

Source: Integrated Post Secondary Education Data System (IPEDS)

Cost of Attending College  
Pikes Peak Community College

<b>Academic year prices for full-time, first-time undergraduate students</b>			
	<b>2010-11</b>	<b>2009-10</b>	<b>2008-09</b>
<b>Tuition &amp; fees</b>			
In-district	\$3,134	\$2,596	\$2,249
In-state	\$3,134	\$2,598	\$2,249
Out-of-state	\$12,654	\$9,582	\$8,973
<b>Books and supplies</b>	\$1,749	\$1,749	\$1,698
<b>Off-campus</b>			
Room and board	\$8,478	\$8,478	\$8,478
Other expenses	\$4,698	\$4,698	\$4,374
<b>Off-campus with family</b>			
Other expenses	\$4,554	\$4,554	\$4,230

([Source](#): IPEDS College data 2010-2011)

University of Colorado, Colorado Springs

<b>Academic year prices for full-time, first-time undergraduate students</b>			
	<b>2010-11</b>	<b>2009-10</b>	<b>2008-09</b>
<b>Tuition &amp; fees</b>			
In-state	\$6,029	\$5,733	\$5,517
Out-of-state	\$16,933	\$16,653	\$16,353
<b>Books and supplies</b>	\$1,728	\$1,728	\$1,748
<b>On-campus</b>			
Room and board	\$8,758	\$7,490	\$7,204
Other expenses	\$5,096	\$5,096	\$4,772
<b>Off-campus</b>			
Room and board	\$8,478	\$8,478	\$8,478
Other expenses	\$5,096	\$5,096	\$4,772
<b>Off-campus with family</b>			
Other expenses	\$2,420	\$2,420	\$2,384

(Source: IPEDS College data 2010-2011)

Indicators

Integrated Post Secondary Education Data System  
 Higher education degrees awarded  
 Tuition and fees

Data Gaps

Technical/professional degrees awarded