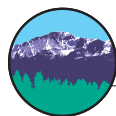


MIP UPDATE

PIKES PEAK AREA COUNCIL OF GOVERNMENTS

MILITARY IMPACT PLANNING



Pikes Peak Area
Council of Governments
Communities Working Together

MEETING & EVENTS

January 11: Adult Education/Workforce Partnership Groups, 10:30 a.m.

January 19: Colorado Defense Mission Coalition, 3 p.m.

January 21: Medical & Behavioral Health/Social Service Partnership Groups, 12:30 p.m.

February 1: Housing Partnership Group, 3:00 p.m.

February 10: K-12 Education Partnership Group, 3:30 p.m.

February 10: Planning & Zoning/Transportation Partnership Groups, 1:30 p.m.

Note: All meetings are held at PPACG at the address below unless otherwise noted.

PPACG MIP STAFF

Rob MacDonald, Executive Director

Kathleen Hatten, MIP Manager

Joe Hanke, MIP Planner

Sarah White, MIP Planner

Tom Miller, GIS Analyst

Erica Whitcombe, MIP Update Editor

Pikes Peak Area
Council of Governments
15 South 7th Street
Colorado Springs, CO 80905
719-471-7080 (phone)
719-471-1226 (fax)
www.ppacg.org

PHASE III OF GROWTH PLAN MOVES FORWARD

PPACG and our stakeholders, through the Colorado Defense Mission Coalition (CDMC) and Growth Plan partnership groups, continue to address the impacts of Fort Carson growth and deployments on the region through Phase III of the Fort Carson Regional Growth Plan.

The focus of this phase is continued communication and coordination between Fort Carson and off-post providers and implementation of the recommendations and actions identified in Phases I and II of the Growth Plan. The timeframe for this third phase is July 1, 2010, through June 30, 2011. Included in this effort will be ongoing updates to the Fort Carson Demographic Model (FCDM) developed in Phase II. To inform the model, a survey of Fort Carson Soldiers and

families is currently in process to help refine information regarding Soldier and family demographics and any changes in trends, including Soldier and family off-post housing preferences, needs for services such as child care, and information about whether families will leave the region during deployments. The results of the survey are expected in early 2011. The chart on page 2 shows current projections regarding Soldiers present in the region through FY 2013.

Updates will continue to be provided as new information is obtained. For additional information on the Growth Plan, please visit PPACG's website (<http://www.ppacg.org/military-impact/fort-carson-regional-growth-plan-intro>).

(continued on page 2)

NETWORK OF CARE LINKS SERVICE MEMBERS AND THEIR FAMILIES TO RESOURCES

PPACG has contracted with Trilogy Integrated Resources to develop a website to provide valuable information and resources to service members, veterans, and family members. This effort helps implement recommendations from the Phase II Fort Carson Regional Growth Plan that the region establish a primary point of entry for a social services directory and call center.

[Network of Care](#) sites have been established in other states, including California, Maryland, and Oregon. In addition to providing an online, user-friendly directory of services, the site



will have many features to assist military members, veterans, and families in the region. Some of these features include:

- All crisis intervention and emergency services, as well as all emergency shelters.

(continued on page 3)

COMMUNITY PARTNERSHIP FORUM KEEPS CITIZENS IN THE LOOP

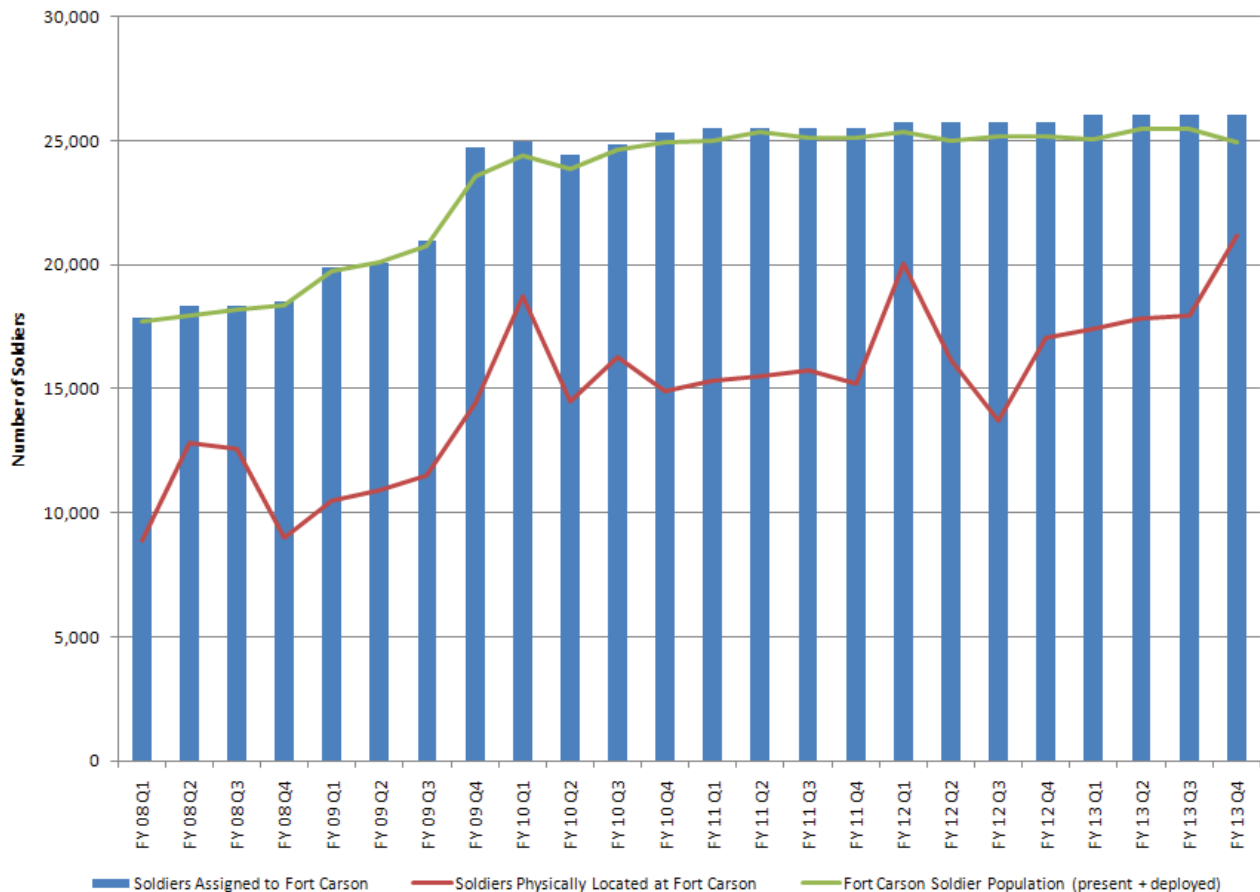
Fort Carson and community leaders gathered at the Antlers Hilton on August 26 to update the community on activities at Fort Carson, including continuing deployments. The forum, hosted by the Pikes Peak Area Council of Governments and sponsored by NewsFirst 5 and Security Service Federal Credit Union, included presentations by Fort Carson's Commanding General Major General David G. Perkins and PPACG staff.

A panel of experts moderated by NewsFirst 5 anchor Adam Atchison answered questions from the audience. Questions included how the community can help Fort Carson Soldiers and families, how businesses can become more engaged with Fort Carson, and what are the continuing and anticipated impacts of Fort Carson on community services, including schools and the regional transportation system. The event was attended by more than 250 people. Copies of the presentations given at the August forum and other events can be found on PPACG's website (<http://www.ppacg.org/military-impact/fort-carson-regional-growth-plan-intro/meetings/town-halls>). ❖



NewsFirst 5 news anchor Adam Atchison moderates panel including (l-r) Fort Carson's commanding general, Major General David G. Perkins, Garrison Commander Robert F. McLaughlin, Greater Colorado Springs Chamber President & CEO Dave Csintyan, PPACG Executive Director Robert F. MacDonald, and PPACG Military Impact Planning Program Manager Kate Hatten.

Soldier Population Summary



Note: Deployment cycles are subject to change; Soldier projections are based on PPACG analysis of Fort Carson troop data and current available information on deployments. Data past FY 2013 are not currently available.

REGIONAL SUSTAINABILITY PLANNING MOVING FORWARD

In August 2010, PPACG initiated a regional sustainability effort for El Paso and Teller counties. Working in cooperation with stakeholders, including Fort Carson, this project includes the development of goals that will provide the foundation to create a Regional Sustainability Plan. The purpose of the plan is to address sustainability in a regional context and help bring together and build upon existing sustainability efforts.

Focus groups consisting of subject matter experts and other stakeholders were formed to help draft “stretch goals”—goals that are both aspirational and inspirational and that will push everyone to move beyond the status quo. A Consensus Committee comprised of elected officials; federal, state, and local agency representatives; business and community leaders; and other stakeholders provides policy direction and final recommendations on the regional stretch goals and plan. The focus groups will continue to provide valuable input into the plan development.

Development of the plan includes two phases.

Phase I (August–December 2010) developed stretch goals that reflect where the region will strive to be by 2030. Goals will be established for the following areas:

- Energy
- Water
- Materials
- Management (procurement and recycling)
- Built & Natural Environment
- Transportation
- Economic Development
- Health
- Education
- Arts and Culture

The draft goals were presented to the public at the Southern Colorado Sustainability Conference on November 18th and finalized in early December.

Phase II (beginning in January 2011) will utilize the stretch goals

to develop a sustainability plan for the Pikes Peak region. This plan will establish measurable objectives, strategies, and benchmarks and will identify agencies that will be responsible for implementation of the plan.

This regional effort defines sustainability as acting in a manner that improves our quality of life by balancing economic vitality, a healthy vibrant community, and mindful stewardship of natural resources and the environment. The goals consider this “triple bottom line” (economy, society, and ecology) in developing a framework that can help us maintain or improve our quality of life.

For further information on the sustainability goals or how to participate in the Regional Sustainability project, please visit PPACG’s website (<http://www.ppacg.org/sustainability/aboutsustain>) or contact Sarah White, PPACG Military Impact Planner, at 719-471-7080 x140 or at swhite@ppacg.org. ❖

Network

(continued from page 1)

- A state-of-the-art, pre-vetted library with 35,000 articles and dozens of interactive assessment tools, all of which are updated quarterly.
- An advanced social networking platform, including blogs, forums, wikis, and groups. The social networking platform is also completely commercial-free and already has thousands of users and groups.
- A database of more than 21,000 assistive devices that can be searched by function, company, or keyword.
- A personal health record where users can record important medical data and grant customizable access to a relative or doctor.
- News from around the country, updated daily.

The site will also provide federal and state legislative information and other functions. “The Pikes Peak Area

Council of Governments is pleased to work with Trilogy and our service provider partners to develop this Network of Care site for the Pikes Peak region,” states Robert MacDonald, Executive Director, PPACG. “Developing a primary point of entry for service members, veterans, and family members is one of the highest-priority recommendations of the Fort Carson Regional Growth Plan. This website is an exciting opportunity to provide valuable information and service linkages for our military community.”

PPACG staff will work with Trilogy, Fort Carson Regional Growth Plan partnership group participants, and other stakeholders to develop the site over the next few months, with launch anticipated in the spring of 2011. For more information, please contact Kate Hatten, PPACG’s Military Impact Planning Program Manager, at 719-471-7080 x131 or khatten@ppacg.org. ❖

TRANSPORTATION PROJECTS EASING FORT CARSON TRAFFIC

Through the Fort Carson Regional Growth Plan and other cooperative efforts in the region, several transportation projects have been initiated to address the impacts of Fort Carson growth. Below is an overview of key projects.

I-25/State Highway 16: Gate 20 is a major access point for Fort Carson Soldiers and experiences very high traffic volumes. The Colorado Department of Transportation (CDOT) has recently completed a \$63 million project to improve the I-25/SH 16 interchange, providing direct access to Gate 20, as well as making capacity and safety improvements to SH 16 (Mesa Ridge Parkway) and US 85. The federally- and state-funded project has helped mitigate congestion at Gate 20, making Fort Carson more readily accessible to the troops and making the area safer for all drivers in the region. The improvements also facilitate Fort Carson's rapid deployment needs.

South Academy Boulevard is another major access route to Fort Carson, in addition to serving Pikes Peak Community College and other businesses and residential areas. Improvements to South Academy Boulevard are part of the South Metro Accessibility project funded by the Pikes Peak Rural Transportation Authority. This local funding includes the widening of South Academy Boulevard between SH 115 and I-25, replacement of bridges, a new expressway between Academy and Powers Boulevard, and improved access to Fort Carson's Gate 4. More than \$26 million in improvements to South Academy Boulevard between I-25 and SH 115 were completed in November 2010. This project provides significant enhancements to support Fort Carson growth and improve traffic flow and safety in the region.

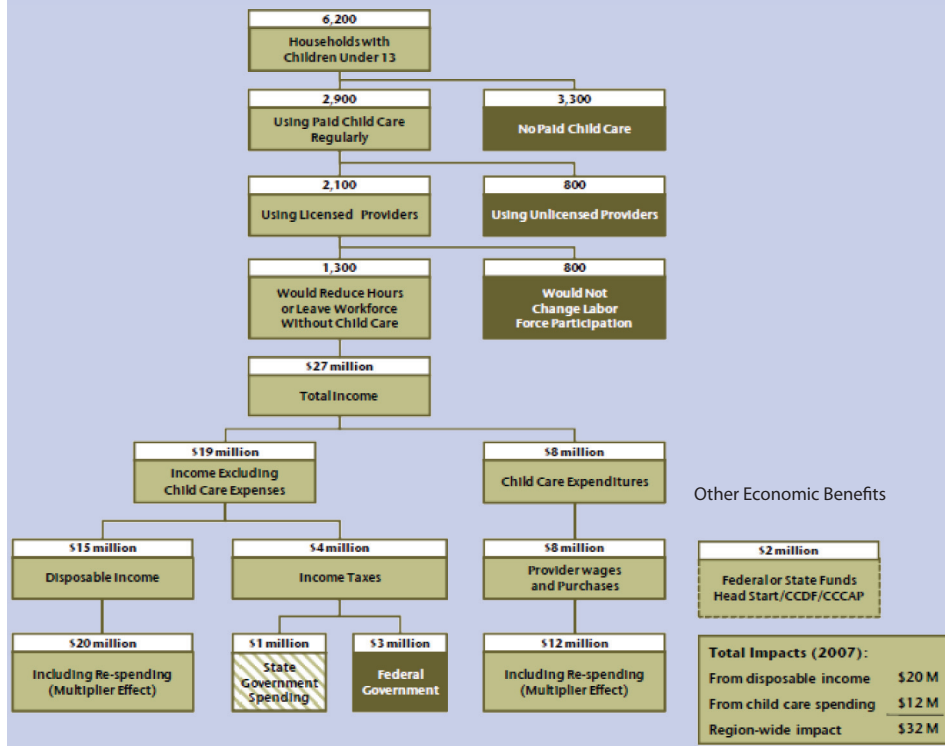
State Highway 115 borders Fort Carson on the west and serves as a major access route to the installation. Because of current traffic needs and anticipated future traffic and access requirements, Fort Carson is developing plans to open Gate 6 off SH 115, approximately four miles south

CHILD CARE: AN IMPORTANT PART OF REGIONAL ECONOMY

Phase II of the Fort Carson Regional Growth Plan included an economic impact analysis of child care services in the Fort Carson region. This analysis found that the economic impact of child care in the Fort Carson region in 2007 was approximately \$413 million, with approximately \$32 million relating to Fort Carson Soldier households. This number includes approximately \$292 million in after-tax income by workers who would otherwise leave the workforce or reduce their hours if child care were not available to them. The figure below illustrates the economic impacts of child care specifically related to Fort Carson households.

As Fort Carson continues to grow, access to quality child care is very important for Fort Carson families. Early care and education opportunities not only allow spouses to participate in the workforce, contributing to the regional economy, but also provide support for families facing the stresses of deployments. For more information on Fort Carson-related demand for child care services in the region, as well as access to more detailed information and publications on the economic impacts of child care, visit PPACG's website (<http://www.ppacg.org/military-impact/fort-carson-regional-growth-plan-intro/resource-areas/childcare-and-development>). ❖

2007 Fort Carson Soldier Households: Economic Impacts of Child Care



of Gate 1 (which is across from Cheyenne Mountain State Park). Improvements on SH 115 are needed to accommodate increased traffic and improve safety along the corridor. Phase II of the Fort Carson Regional Growth Plan includes a planning study for SH 115 that addresses needs for safety improvements between Gates 1 and 6, including safety and access improvements at Gate 5 and support for future activation of Gate 6. Construction of improvements at Gate 5 are scheduled to begin in February 2011. The full report

can be found on PPACG's website: http://www.ppacg.org/files/Military_Impact/Fort_Carson_Growth/Project_Materials/Growth_Plan/Phase_II/SUPP-SH%20115%20Planning%20Study_Report.pdf.

All reports addressed by the Growth Plan can also be found on PPACG's website: <http://www.ppacg.org/military-impact/fort-carson-regional-growth-plan-intro/project-materials/growth-plan-documents>. ❖