

Section 2:

Fort Carson Demographic Model & Analysis

Review and Analysis of Demographic Data

The Pikes Peak Area Council of Governments (PPACG) continues to conduct primary and secondary research to inform the Fort Carson Regional Growth Plan (Growth Plan) analysis and update the Fort Carson Demographic Model (FCDM) in order to provide the region with timely, detailed data regarding Fort Carson troop and family member projections. Key data sources include Army Stationing and Installation Plan (ASIP) and G-1 (“boots on the ground”) data from Fort Carson, Defense Enrollment Eligibility Reporting System (DEERS) data sets, 2010 Census and American Community Survey data and survey information¹.

PPACG utilizes these data in order to obtain a more complete picture of Soldier and family demographics and preferences specific to Fort Carson. A more comprehensive picture of Soldiers and families enables PPACG and the region to better anticipate and prepare for continuing changes in demands for off-post services related to Fort Carson growth. However, PPACG still continues to face challenges in obtaining needed Soldier and family demographic data for a variety of reasons. These challenges include reluctance of Soldiers and family members to complete surveys, as well as staff turnover that affects institutional knowledge and requires additional approvals for PPACG to obtain previously-accessible data. However, with the assistance of Fort Carson staff, DoD’s Office of Economic Adjustment, and the Defense Manpower Data Center, PPACG has been able to obtain datasets that provide better information regarding Fort Carson in order to assist the region in planning for off-post Soldier and family needs.

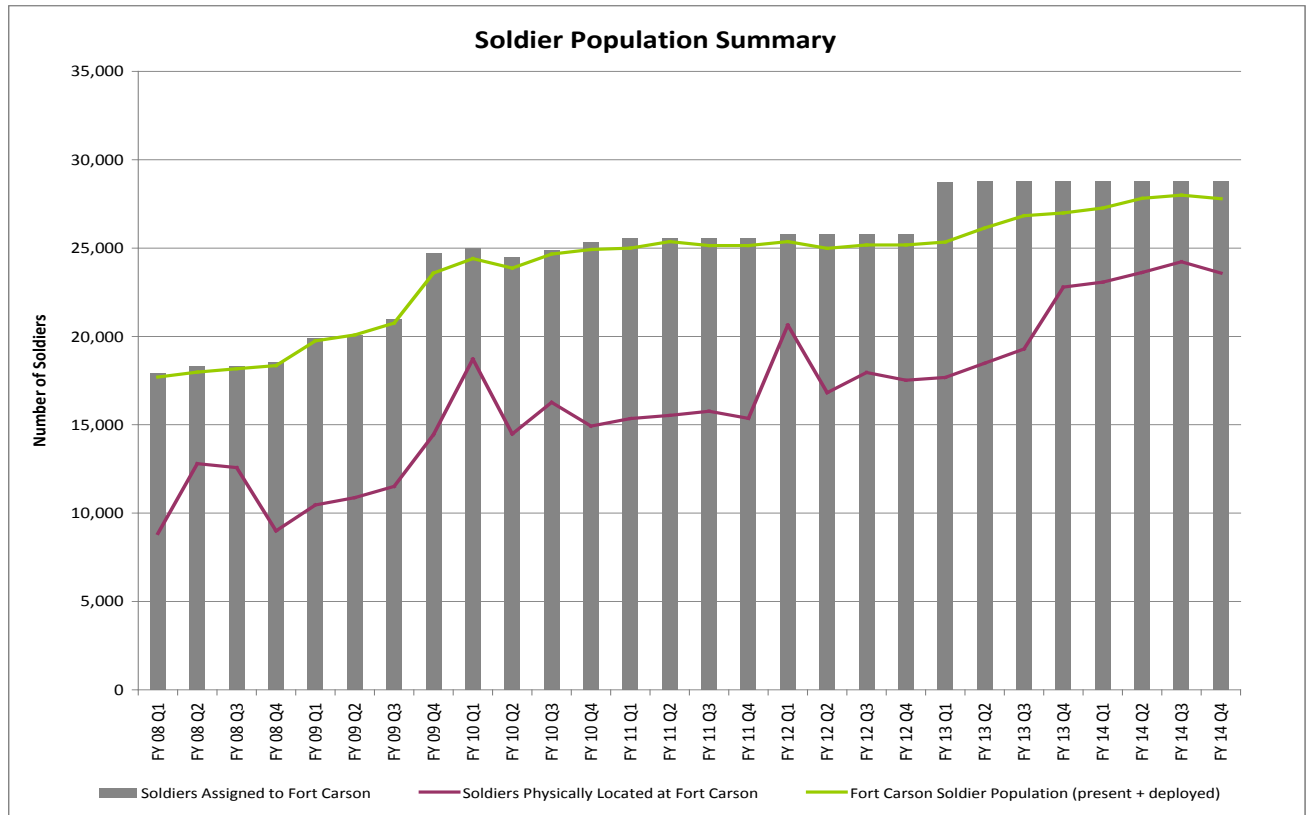
Overall, the FCDM indicates that approximately 50-55 percent of Fort Carson Soldiers are married, with .87 children per Soldier. Accompaniment rates (i.e., the number of family members who move to/remain in the region when a Soldier moves to Fort Carson or is deployed) vary based on ages of children, spouse employment, number of deployments, and other factors. Figures 2-1 and 2-2 below illustrate the most recent projections regarding Fort Carson Soldiers and family members. These projections include very preliminary information regarding the recently-announced stationing of a combat aviation brigade (CAB) at Fort Carson. The CAB is expected to bring an additional 2,700 Soldiers (approximately 8 percent officers, 11 percent warrant officers, and 81 percent enlisted). Please note that the CAB projections include PPACG’s assumptions regarding the standing up of the unit (expected to begin in FY 2013² and completed in FY 2014). While it is anticipated that the CAB will deploy once it is fully established, no deployment information is available at this time. Key factors that will be

¹ See Section 1 of the Phase II Fort Carson Regional Growth Plan for a detailed explanation of the Fort Carson Demographic Model and the datasets utilized in the Growth Plan modeling.

² Throughout this report, FY refers to the federal fiscal year (1 October-30 September).

factored into the model (once data are available) will include the general makeup of a CAB (breakdown of enlisted personnel, warrant officers, and officers), as well as factors related to family demographics based on rank (such as percent married, numbers and ages of children, etc.) The projections depicted below do not yet take these details into account but assume overall demographics similar to existing units at Fort Carson. The graphics do take into account anticipated deployments of Fort Carson’s current units based on currently-available data through FY 2014.

Figure 2-1. Soldier Projections

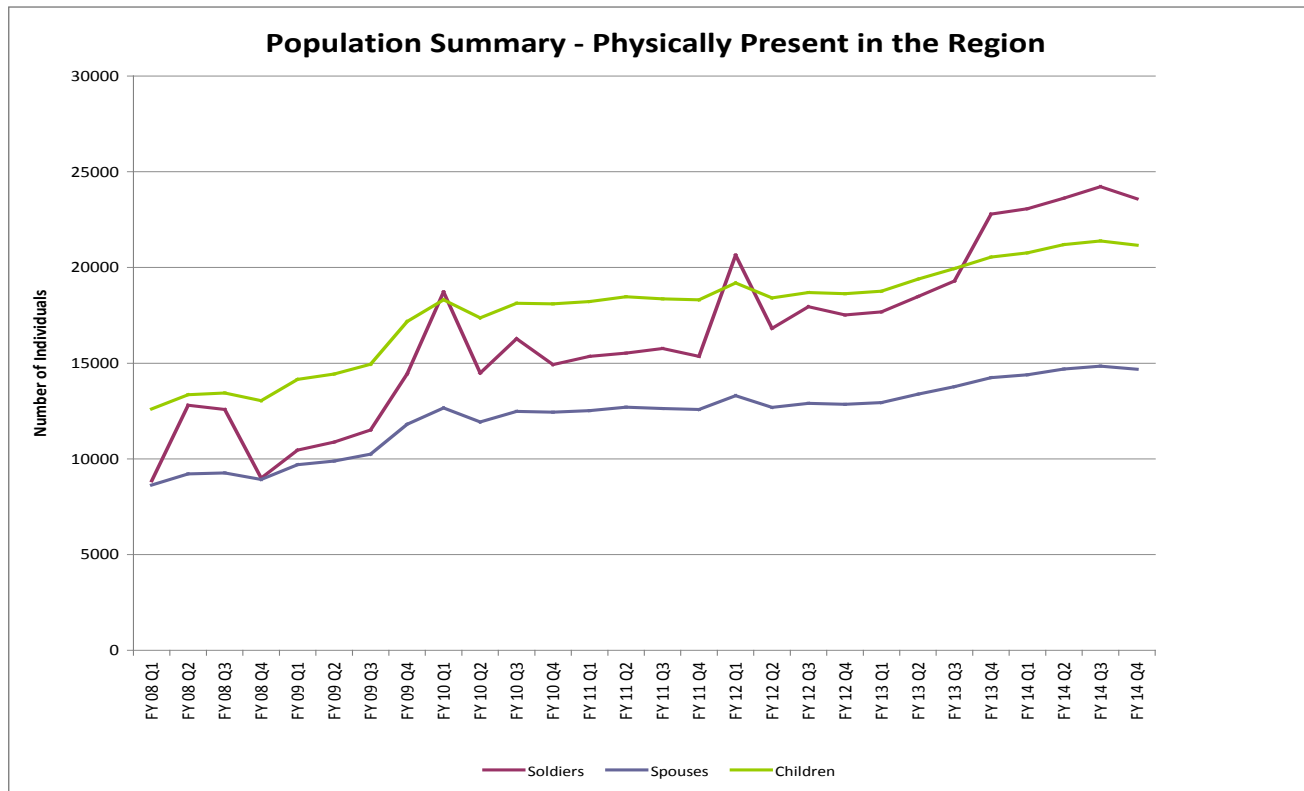


Source: Fort Carson Demographic Model (FCDM)

Notes:

1. Deployment cycles are subject to change, but are anticipated to continue through FY 2014.
2. The forecasted numbers reflect the addition of a Combat Aviation Brigade beginning in FY 2013 and reaching full strength by FY 2014 Q1.
3. Soldier projections are FCDM-generated and based on PPACG analysis of Fort Carson troop data and deployments schedules.

Figure 2-2. Soldier and Family Members Present in the Region Projections



Source: Fort Carson Demographic Model (FCDM)

Notes:

1. Deployment cycles are subject to change, but are anticipated to continue through FY 2014.
2. The forecasted numbers reflect the addition of a Combat Aviation Brigade beginning in FY 2013 and reaching full strength by FY 2013 Q1.
3. Soldier projections are FCDM-generated and based on PPACG analysis of Fort Carson troop data and deployments schedules.

2011 Fort Carson Soldier and Family Survey

PPACG contracted with BBC Research & Consulting to conduct a new survey of Fort Carson Soldiers and family members in early 2011. The purpose of the survey was to update Soldier and family demographic information, as well as any changes in preferences, particularly regarding propensity for families to remain in the region during deployments and after separation/retirement from the Army, interest in/barriers to purchasing housing in the region, satisfaction with off-post services, including schools, and transportation preferences.

Notification of the online survey was distributed via e-mail with the assistance of Fort Carson’s Public Affairs Office to Fort Carson’s brigades, family readiness group leaders, and other Fort Carson personnel. PPACG received 320 responses to the survey; the majority of respondents were spouses of Soldiers. The survey results indicate that approximately 90 percent of Soldier’s spouses/partners live in the Fort Carson region; however, only 64 percent indicated that their

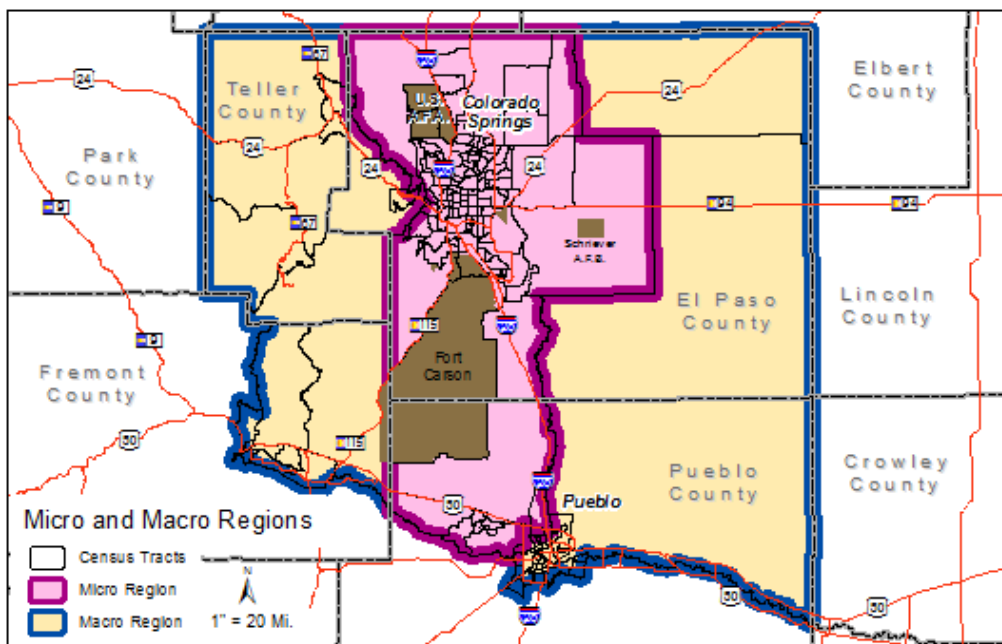
families would remain in the region during the Soldier's next deployment. Additionally, approximately 48 percent indicated that they do not plan to stay in the region following the Soldier's retirement/expiration of term of service (ETS). Where appropriate, information from the survey is used to update the FCDM and analysis of trends and conditions for key impact areas. Detailed information regarding the survey responses, including information on household profile, education, housing, and commuting is available in the survey report in Appendix D.

The Geography of Regional Impacts

PPACG's analysis of DEERS, Census and other data, as well as transportation modeling has enabled PPACG to identify and map Soldier and family locations throughout the region in order to assist in ongoing planning efforts related to housing, transportation, K-12 schools, and child care needs. PPACG conducted a travel (labor) shed analysis, an analysis technique for showing the relationship between residences and workplaces, using the latest (January 2011) DEERS data set and 2010 Census tract updates, as well as zip code information in order to better identify key impact areas in the Growth Plan's four-county region.

The analysis revealed that there are very few Soldiers living in the western portion of Fremont County and southern Pueblo County. As such, the Fort Carson Study Area Boundaries Map (see Figure 2-3. Fort Carson Regional Growth Plan Macro Region below) reflects the outer extent (outlined in dark blue) of the study area census tracts where the bulk (approximately 98 percent of the addresses within the 80000 and 81000 series zip codes) of the Soldiers who commute to Fort Carson live.

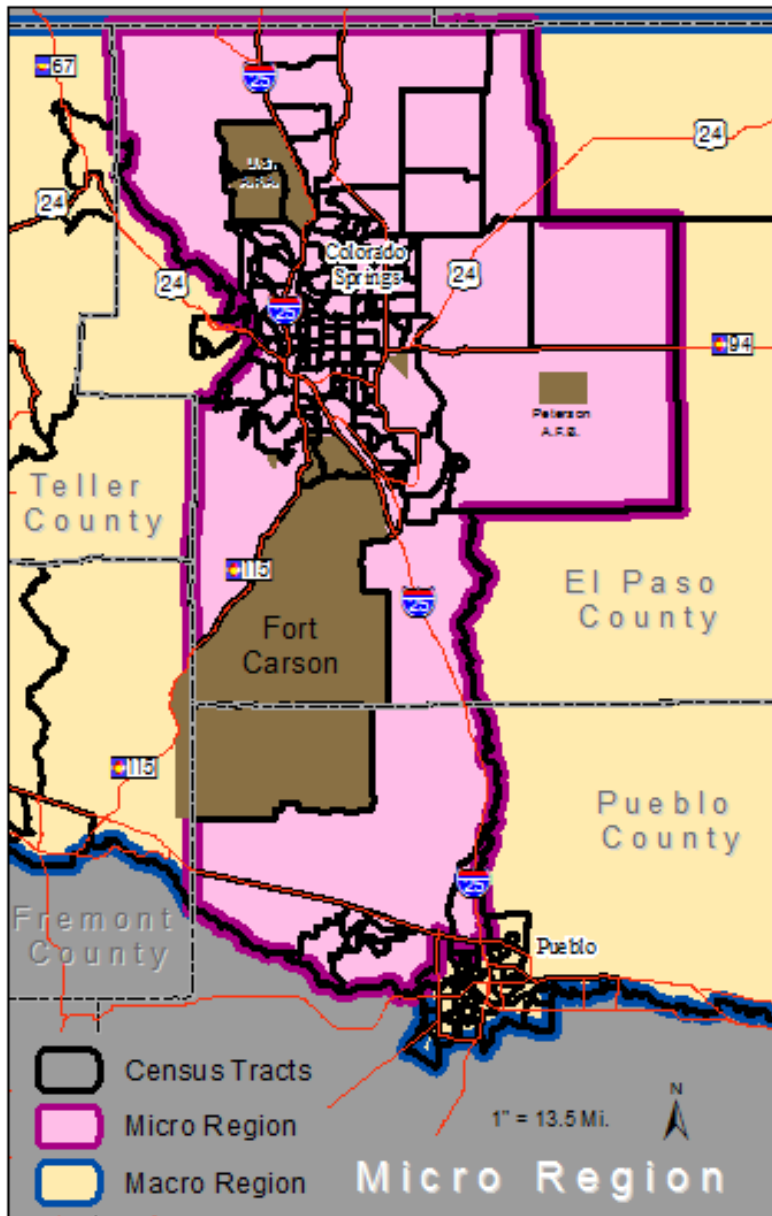
Figure 2-3. Fort Carson Regional Growth Plan Macro Region



Source: Pikes Peak Area Council of Governments

PPACG staff further refined the traffic (labor) shed area (by 2010 census tract), which is also depicted on the Fort Carson Study Area Boundaries Map as the Micro Region boundary (shaded in pink). PPACG's analysis indicates that approximately 96 percent of Soldiers who commute to Fort Carson live within the Micro Region. See Figure 2- 4. Fort Carson Regional Growth Plan Micro Region below.

Figure 2-4. Fort Carson Regional Growth Plan Micro Region



Source: Pikes Peak Area Council of Governments

Additional data analysis and mapping will be presented in the following sections addressing specific issue areas, as well as in Appendix A – Growth Plan Maps.

Ongoing Actions and Implementation

PPACG has worked through many challenges to identify and obtain access to data to inform the FCDM and assist the region in ongoing planning and operational efforts in response to Fort Carson growth and deployments. With updated Census information and mapping capabilities, PPACG will continue to enhance modeling and map products to better inform the region regarding the dynamics of Fort Carson growth and deployments.