

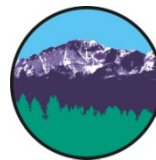
FORT CARSON REGIONAL GROWTH PLAN UPDATE FOR EDUCATION PARTNERSHIP GROUP

Presented by



BBC Research & Consulting
3773 Cherry Creek N. Dr.
Suite 850
Denver, CO 80209-3868
303-321-2547 tel
303-399-0448 fax
www.bbcresearch.com

Presented to



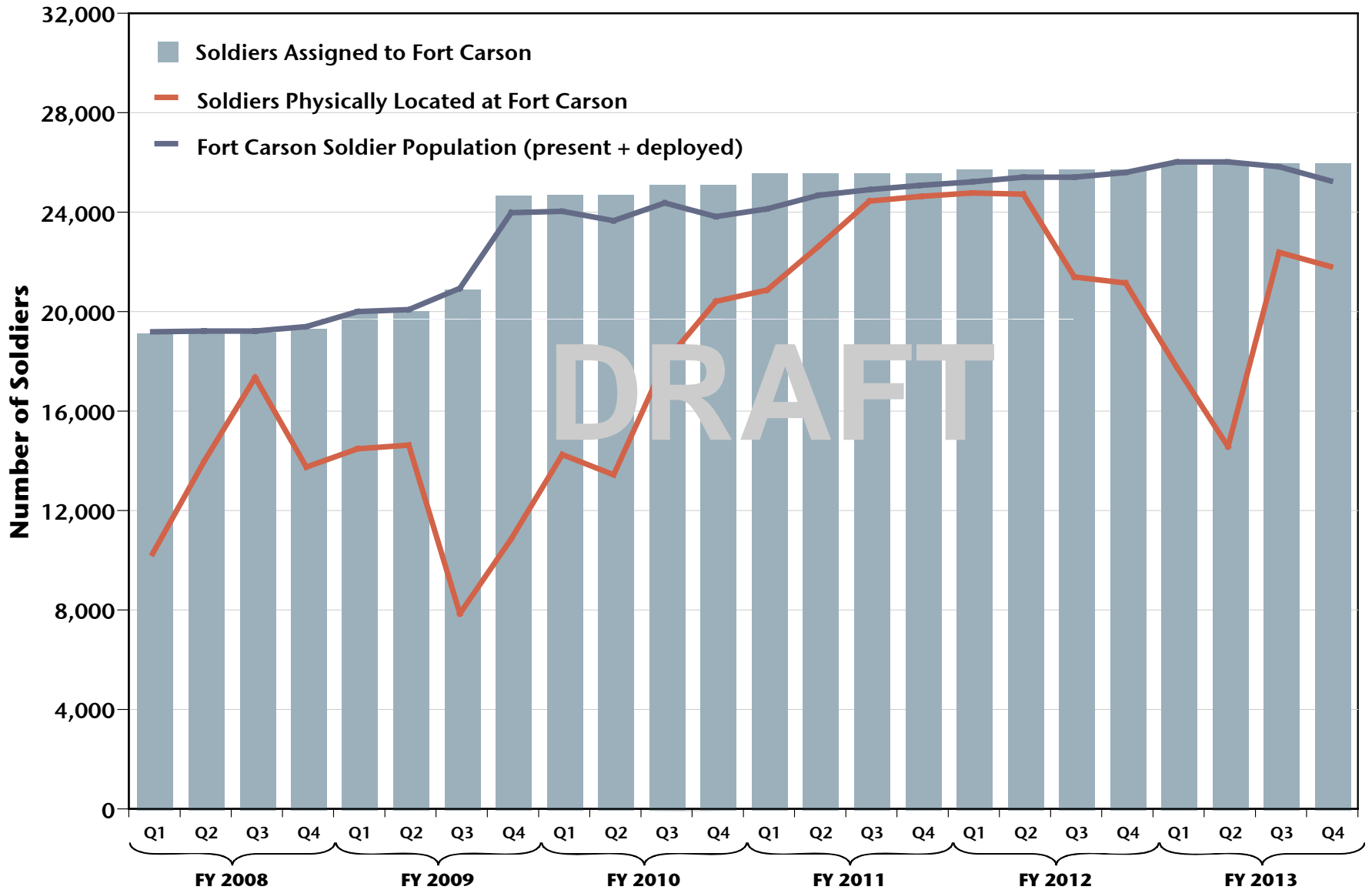
Pikes Peak Area
Council of Governments
Communities Working Together

October 8, 2009

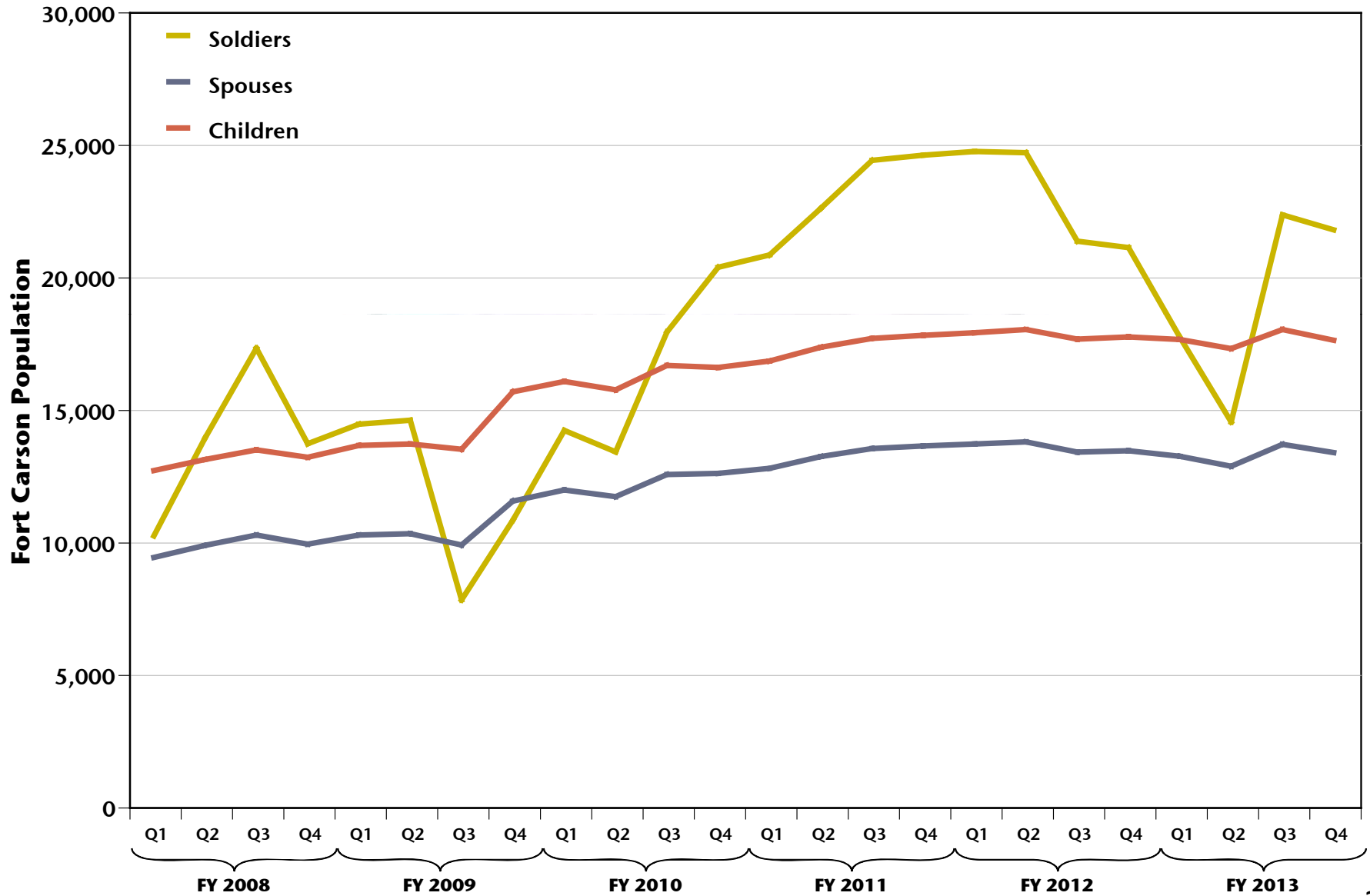
DATA SOURCES

- **“Assigned and deployed”**
 - Projections from Garrison Command
 - Updated quarterly
- **Fort Hood Survey; 675 responses**
- **Fort Carson survey; 277 responses**
- **Housing Survey from 2008**
 - Special data runs
 - Focus on accompaniment rate, housing needs
- **DEERS data**
 - Working with PPACG
 - Requires data cleaning
 - Valuable for number and ages of children
- **American Community Survey Census**
 - 2007 “micro data”
 - Valuable for spouse workforce participation, wages
- **“Boots on the Ground”— 4th ID-G1**
 - Comprehensive data set of numbers and ranks of present Soldiers
- **Defense Manpower Data Center (DMDC)**
 - National data set with demographics
- **EACH Data**
 - Hospital based
 - New

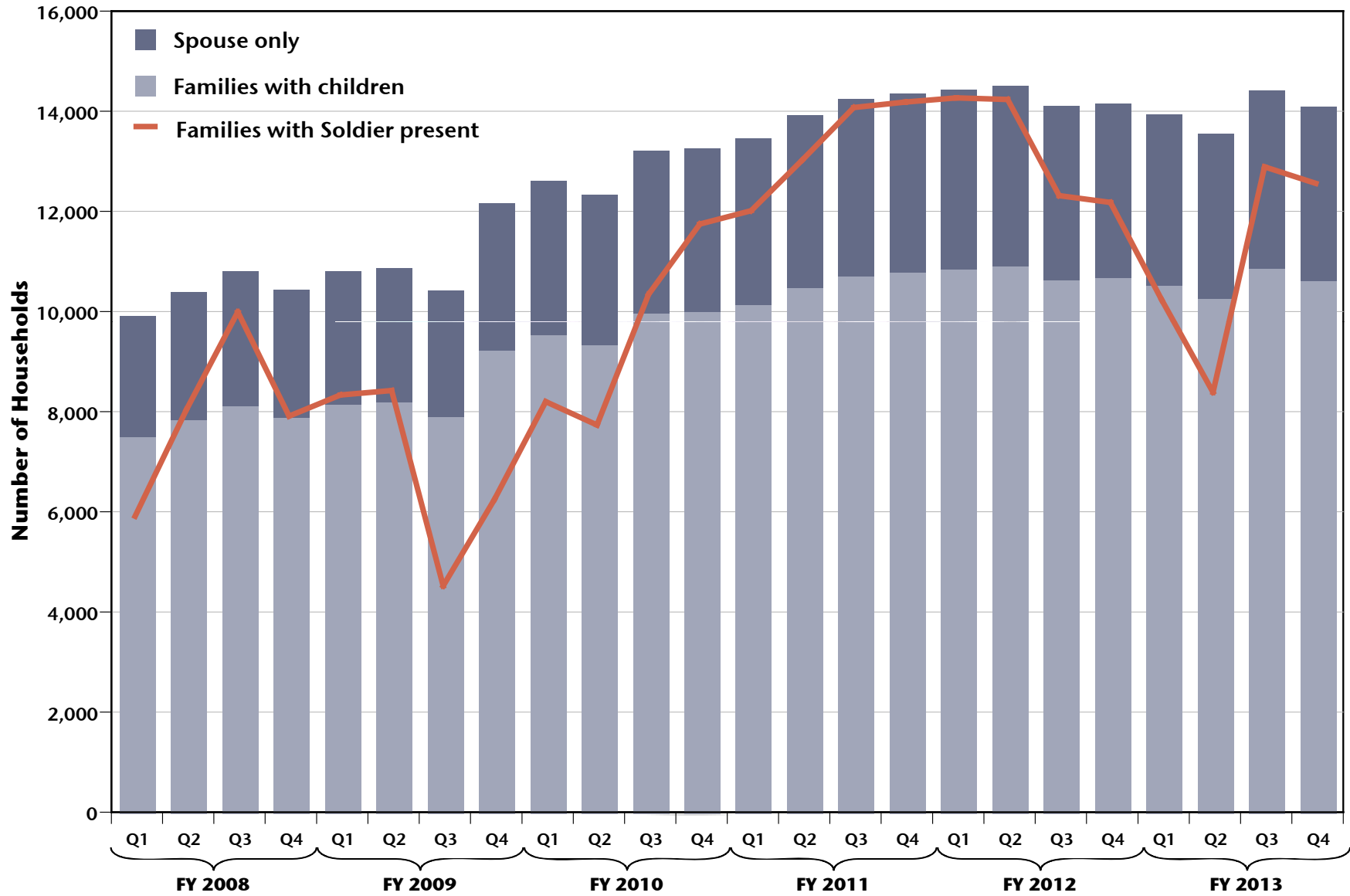
SOLDIER POPULATION SUMMARY



POPULATION SUMMARY—PHYSICALLY PRESENT IN THE REGION



SOLDIER POPULATION SUMMARY



PROJECTED FORT CARSON MILITARY CHILDREN 2009-2013

	FY2009		FY2010		FY2011		FY2012		FY2013	
	FY 09 Q1	FY 09 Q3	FY 10 Q1	FY 10 Q3	FY 11 Q1	FY 11 Q3	FY 12 Q1	FY 12 Q3	FY 13 Q1	FY 13 Q3
Children present when Soldier present	8,562	9,359	14,521	11,547	14,200	19,683	19,947	17,213	17,343	18,002
Children present when Soldier deployed	6,403	6,364	4,104	7,009	4,849	314	305	2,759	3,054	2,363
Total children (present)*	14,964	15,723	18,624	18,557	19,049	19,997	20,252	19,972	20,396	20,366
Newborn/toddler (Less than 3 years old)	2,872	3,017	3,574	3,561	3,655	3,837	3,886	3,832	3,914	3,908
Pre-School (3-4)	2,153	2,262	2,679	2,670	2,741	2,877	2,914	2,873	2,934	2,930
Elementary (5-10)	4,818	5,062	5,996	5,975	6,133	6,438	6,521	6,430	6,567	6,557
Middle School (11-13)	1,853	1,947	2,307	2,298	2,359	2,477	2,508	2,473	2,526	2,522
High School (14-17)	1,904	2,001	2,370	2,362	2,424	2,545	2,577	2,542	2,596	2,592
College age (More than 18 years old)	1,364	1,433	1,698	1,692	1,737	1,823	1,846	1,821	1,859	1,857
Elementary through High School total	8,576	9,010	10,673	10,634	10,917	11,460	11,606	11,445	11,689	11,671
Percent change from preceding October	4%		24%		2%		6%		1%	
Percent Change during school year		5%		0%		5%		-1%		0%

Source: BBC Research & Consulting, 2009.