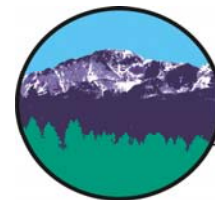




FORT CARSON REGIONAL GROWTH PLAN

Fort Carson Community Partnership Forum
26 August 2010

*Kate Hatten, Program Manager
PPACG Military Impact Planning*



Pikes Peak Area
Council of Governments
Communities Working Together

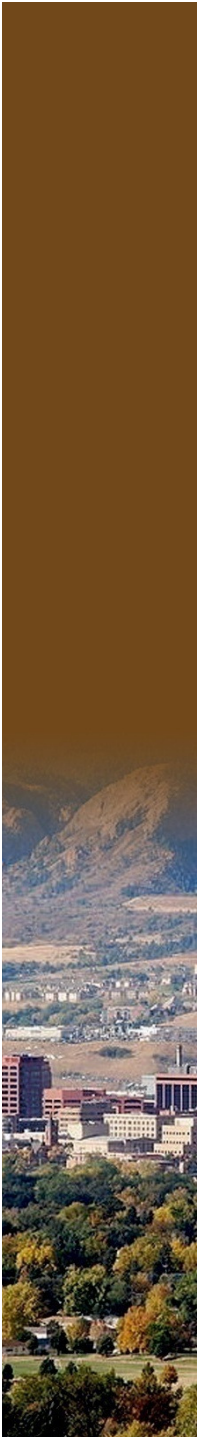
What Is PPACG?

- **Regional Transportation Planning Agency**
- **Area Agency on Aging**
- **Air Quality Planning Agency**
- **Water Quality Management Agency**
- **Pikes Peak RTA Administrator – Funding Authority**
- **Military Impact Planning Agency**
- **Regional Sustainability Planning**



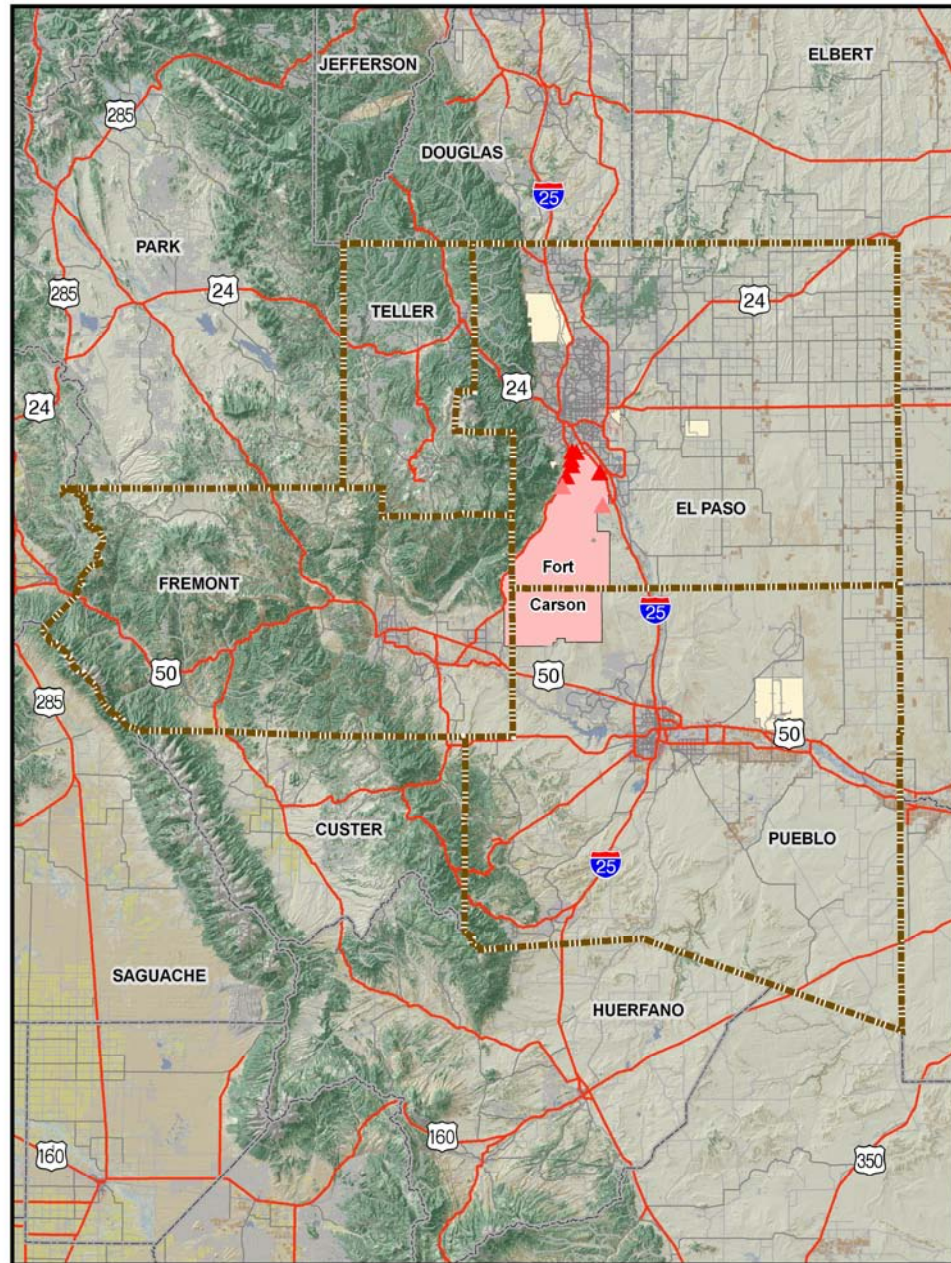
PPACG's Military Impact Planning Program

- **Regional planning, communication, and coordination to address mission growth of military installations**
- **Funded primarily by the Department of Defense, Office of Economic Adjustment**
- **Key focus of the MIP program is the Fort Carson Regional Growth Plan**
 - **Phase I: August 2006 – June 2008**
 - **Phase II: July 2008 – June 2010**
 - **Phase III: July 2010 – June 2011**



Fort Carson Regional Growth Plan Study Area

- Study area includes 4-county region
- Majority of impacts within 30-minute commute of Fort Carson
- Some impacts do extend beyond the immediate Fort Carson region



Fort Carson Regional Growth Plan Phase III Implementation

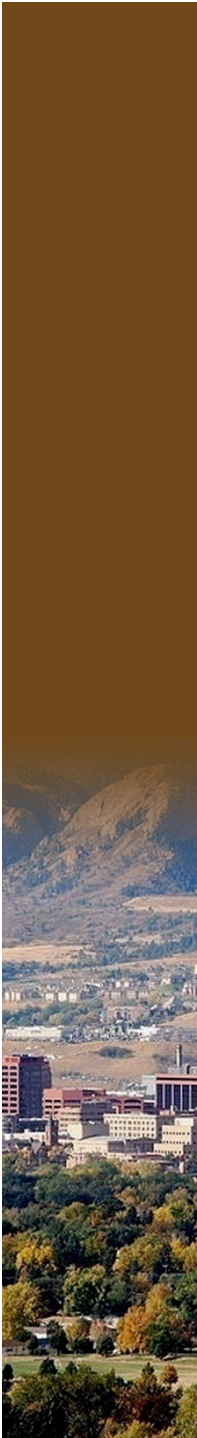
- Phases I & II provided planning tools, quantified impacts and made recommendations to address key issues/impact areas
- Key Phase III components:
 - Information sharing and on/off-post coordination
 - Actions to implement Growth Plan recommendations for key resource areas
 - Enhanced infrastructure and services to meet Fort Carson requirements, Soldier and family needs, and regional needs



Fort Carson Regional Growth Plan

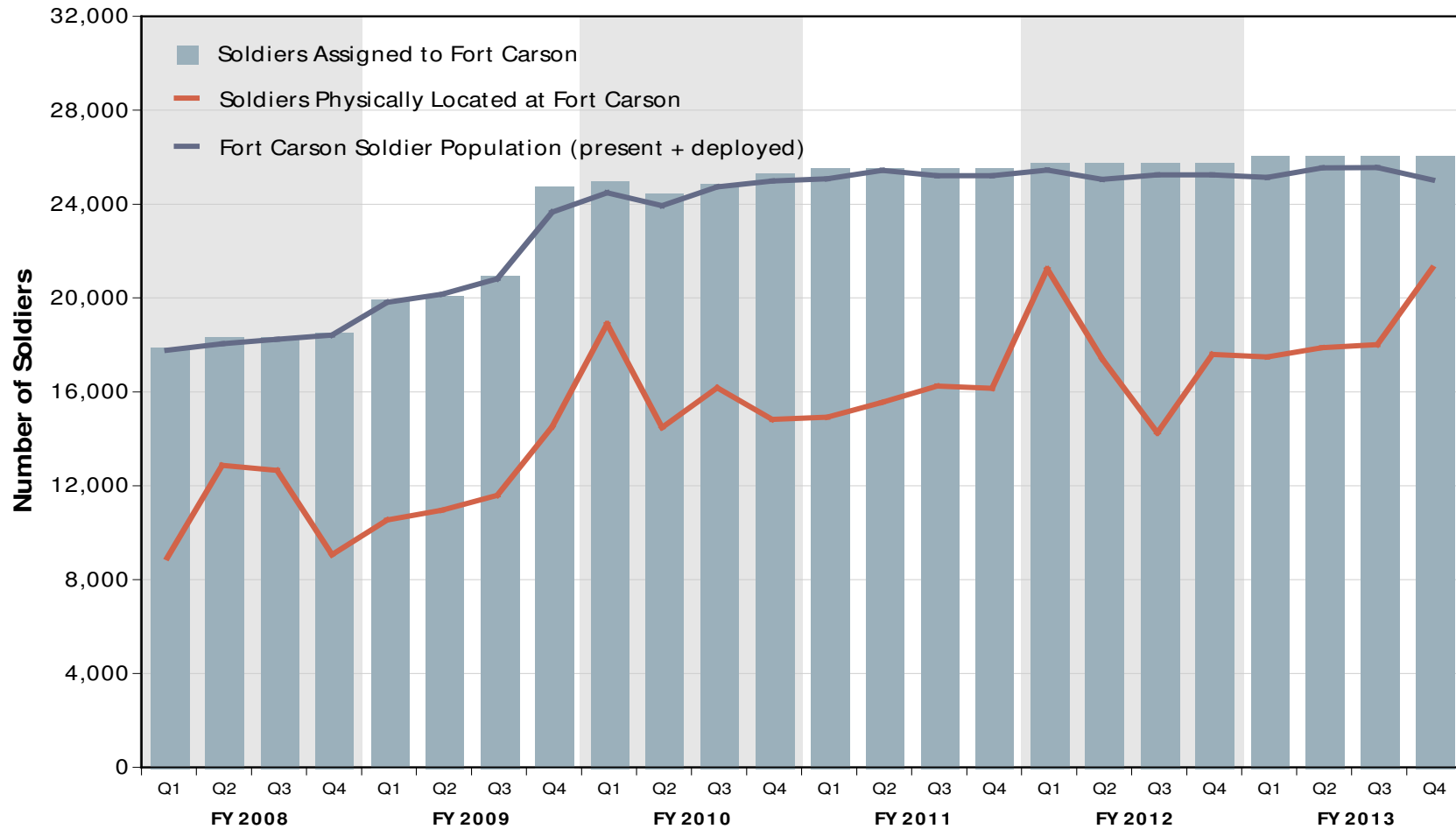
Phase III Data Gathering/Information Sharing

- **Ongoing Soldier and family population projections to assist planners and providers, including:**
 - **Impact of Fort Carson on regional/state economy**
 - **Effects of deployments on housing industry**
 - **Effects of growth and deployments on other services, including:**
 - **Schools and early care and education**
 - **Workforce**
 - **Behavioral health and social service providers**
 - **Transportation needs**



Fort Carson Demographic Model

Soldier Forecasts

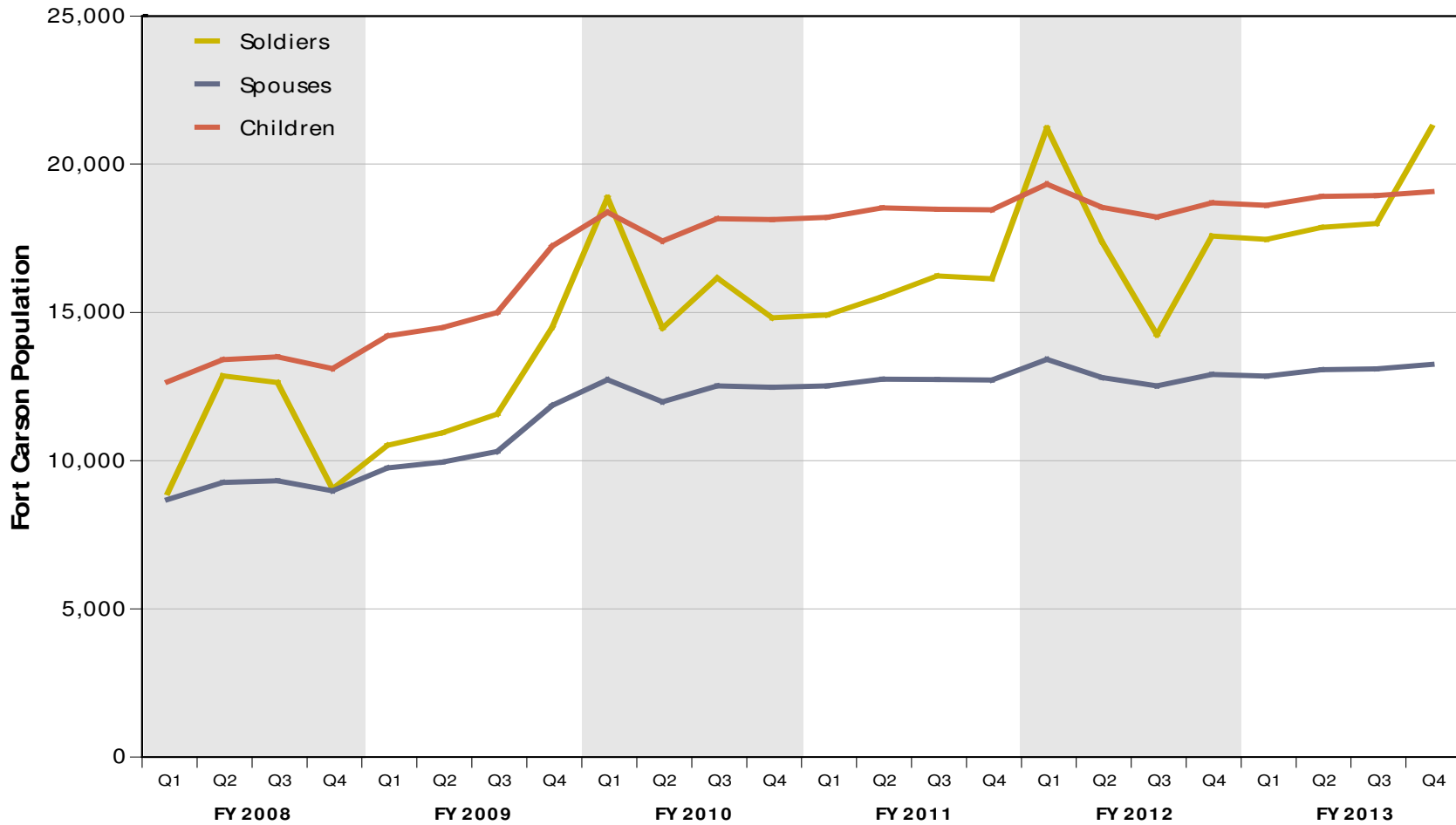


Source: BBC Research & Consulting

Note: deployment cycles are subject to change; Soldier projections are based on PPACG and BBC Research & Consulting data analysis.

Fort Carson Demographic Model

Population Summary: Physically Present



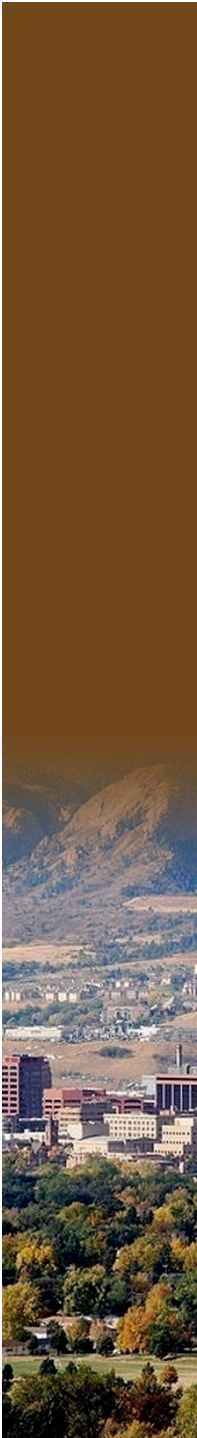
Source: BBC Research & Consulting

Note: deployment cycles are subject to change; Soldier and family projections are based on PPACG and BBC Research & Consulting data analysis.

Fort Carson Regional Growth Plan Phase III Communication & Coordination

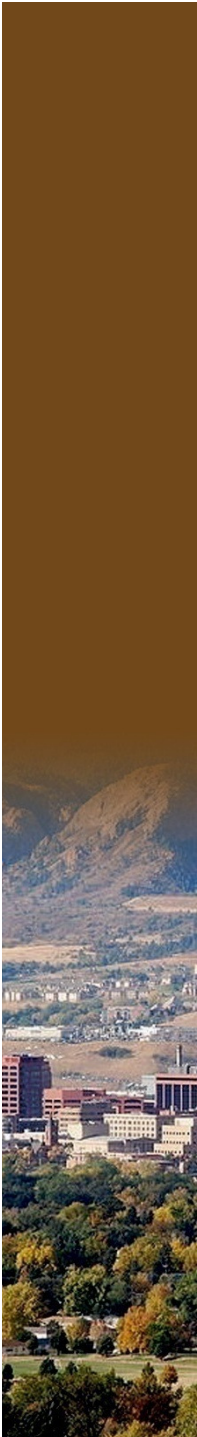
■ Community Provider Trainings

- **Coordination between Fort Carson and community based providers serving Soldiers and family members**
- **Information sharing on key issues affecting Soldiers and families, particularly deployment stresses**
- **Quarterly trainings hosted by PPACG; information presented by Fort Carson (EACH, 4ID, etc.)**
- **Trainings conducted for:**
 - **Behavioral health and social services providers**
 - **Early care and education providers**
 - **Apartment managers**



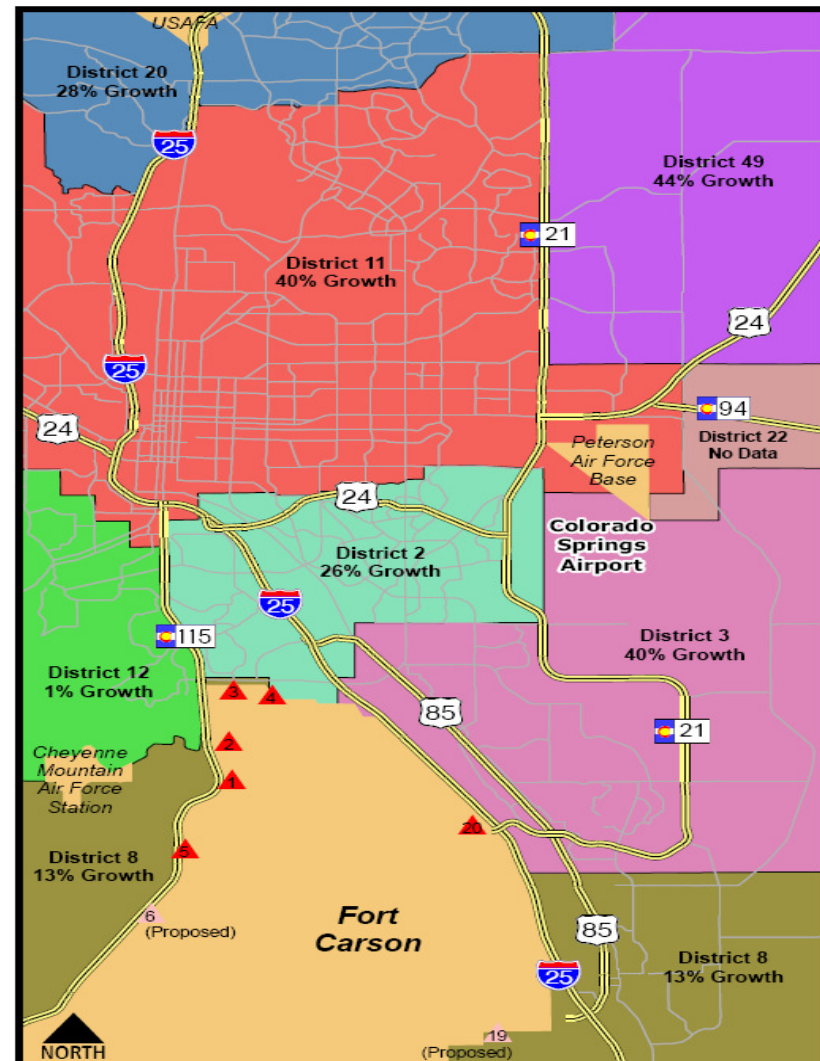
Fort Carson Regional Growth Plan, Phase III Key Recommendations (Child Development)

- **Track and mitigate child care capacity gaps**
 - **Early Learning Venture Alliance (family child care homes)**
 - **Alliance for Kids Accreditation Facilitation Project**
 - **Provider Education and Training**
 - **Behavioral Health Support (Touchpoints training)**
 - **Economic Impacts of Early Care and Education**
 - **Workforce issue**
 - **Economic benefits to region**



Fort Carson Regional Growth Plan, Phase III Key Recommendations (K-12 Education)

- Track school enrollments
- Assist districts in meeting capacity and operational needs
 - Second count day funding?
 - Requirements for serving children with special needs



Increase in number of Fort Carson students between 2008-2009 and 2009-2010 school years.



Fort Carson Regional Growth Plan, Phase III Key Recommendations (Adult Education/ Workforce)

- **Work collaboratively to fund on-post education facility**
- **Work with Colorado Advisory Council on Military Education to address Soldier and family member needs**
- **Address workforce challenges identified, including:**
 - **Early care and education providers**
 - **Behavioral health services**
 - **Medical specialties**



Fort Carson Regional Growth Plan, Phase III Key Recommendations (Social, Behavioral and Medical Health Services)

- Establish a single point of entry for a behavioral health and social services call center and directory
 - PPACG seeking bids to develop centralized web site for military members, veterans, and family members
- Continue/enhance partnerships to serve Soldiers and families (both on- and off-post)
 - Ongoing discussions to develop/enhance collaborative services: a continuum of care
- Address gaps in key medical specialties
 - Efforts to increase collaboration regarding recruitment strategies

Fort Carson Regional Growth Plan, Phase III Key Recommendations (Transportation)

- **Continue roadway improvements:**
 - **PPRTA-funded improvements to South Academy Blvd (\$26+ million to-date)**
 - **State and federal funded capacity improvements to I-25/State Highway 16/Gate 20 access (Approx. \$70 million)**
 - **State Highway 115 safety improvements (Approx. \$17 million)**





Fort Carson Regional Growth Plan, Phase III Key Recommendations (Sustainability)

- **Convene sustainability and community leaders to develop a regional sustainability plan**
 - **PPACG, Fort Carson and many partners collaborating on a Pikes Peak Regional Sustainability Project addressing:**
 - **Energy & Water**
 - **Materials Management**
 - **Health**
 - **Transportation**
 - **Economic Development**
 - **Built & Natural Environment**
 - **Draft regional sustainability goals to be presented at Southern Colorado Sustainability Conference (November 2010)**

Fort Carson Regional Growth Plan, Phase III

Key Community Needs

Community Projects to Support Military Growth
Updated June 2010

Category	Lead Entity/Agency	Project	Total Project Cost	Funding Gap
Education Total funding gap: \$7,263,000	Fountain-Fort Carson D-8	Elementary School #9 on Fort Carson	\$14,600,000	\$0
		Fountain-Fort Carson High School Expansion	\$8,500,000	\$3,500,000
	Colorado Springs D-11	Preschool Classrooms	\$750,000	\$250,000
		Central Registration	\$300,000	\$300,000
		Adult Ed/distance learning for military students-staffing & software/ha	\$620,000	\$620,000
		Elementary School Counselors	\$754,000	\$533,000
		Gifted & Talented Staffing	\$150,000	\$0
	Widefield D-3	Electrical upgrades	\$1,000,000	\$1,000,000
		Telephone Communication System	\$300,000	\$300,000
		Portable classrooms	\$750,000	\$750,000
Central Registration		\$10,000	\$10,000	
Water & Sewer Total funding gap: \$3,808,000	City of Fountain Water Utility	North Santa Fe Water Project	\$975,000	\$375,000
		Bandley Road Water Main Connection	\$960,000	\$860,000
	Widefield Water & Sanitation District	Redrill/Re-equip JHW Wells	\$287,000	\$287,000
		Booster One Transmission Line	\$378,000	\$378,000
		Redrill/Re-equip C-2 & E-1 Wells	\$311,000	\$311,000
		Phase One-East/West Transmission System	\$1,597,000	\$1,597,000
Social Services/ Health & Behavioral Health Total funding gap: \$8,081,980	Pikes Peak Behavioral Health Group	Centralized Call/Referral Center	\$1,400,000	\$1,300,000
		Health Services Website	\$100,000	\$100,000
		Off-post behavioral health service center	\$3,500,000	\$3,425,000
		Case Managers for service center	\$1,875,000	\$1,825,000
		Behavioral Health Educators	\$750,000	\$750,000
	Behavioral Health/Continuum of Care Services (Peer Navigator)	\$500,000	\$500,000	
The Resource Exchange	Early Intervention Services-Special Needs Children	\$2,156,116	\$181,980	
Public Safety Total funding gap: \$4,700,000	Fountain Police Department	Police operations center	\$5,000,000	\$4,700,000
Transportation Total funding gap: \$67,947,350	Colorado Department of Transportation (CDOT)	SH 115 for Gates 5 & 6	\$26,000,000	\$8,947,350
		Gate 20/SH 16/I-25	\$70,000,000	\$0
	El Paso County	South Academy Boulevard Improvements	\$26,100,000	\$0
		Charter Oak Ranch Rd-Access to Gate 19	\$11,000,000	\$6,000,000
	City of Pueblo	Dillon-Eden I-25 Interchange	\$29,000,000	\$24,000,000
		Purcell @ I-25 Improvements	\$29,000,000	\$29,000,000
Child Development	Community Partnership for Child Development/Early Connections Learning Centers	Renovate former D-11 elementary school for infant/toddler care	TDB	TBD
Total Project Costs			\$238,623,116	\$91,800,330

Next Steps

- **Final Phase II Growth Plan available on PPACG's website:**
<http://www.ppacg.org>. Click on Military Impact and then Growth Plan documents
- **Ongoing Data Gathering and Analysis**
- **Ongoing Communication and Partnership with Fort Carson:**
 - **Colorado Defense Mission Coalition (CDMC) and Partnership Group meetings**
 - **Community Provider Trainings**
 - **Development of social services & behavioral health website**
 - **PPACG website and other communications**



Questions and How to Participate

Contact PPACG Military Impact Planning Program

➤ **Phone: 719-471-7080**

➤ **Website: <http://www.ppacg.org>**

